

ToolPath
SOLUTIONS



Who we are

Toolpath solutions is a company specialized in precision metalworking and works in many markets, including the automotive, textile, food, and construction industries.

It's focused on the design of products and services with the maximum quality, time frame and lower cost of production.

With a young and enterprising team, Toolpath Solutions works with aggressiveness and ambition in continuous improvement, achieving in this way the satisfaction and quality in the product obtained by our client, also guaranteeing the competitiveness and sustainability of the company. Currently working nationally and internationally, like Spain, France, Germany, Holland, Switzerland and UK.

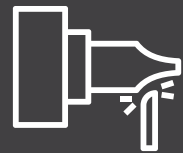


**We produce
customized
metal parts**

Available technologies



Milling



Turning



Laser



Bending



Welding

Production process

Milling

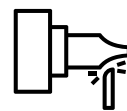


For the manufacture of milling parts, our company has the ability to work with milling centers with Tables from 1200 x 600 mm (X; Y) and Machining from 1100 x 600 x 400 mm (X; Y; Z). We can work with different raw materials from Steel, aluminium, stainless steel, bronze, brass, and technical plastics.





Turning



We manufacture precision turning parts to suit your needs, with diameters between 6mm up to 450 mm. We are also equipped with C and Y axis.



Laser



Top technology equipment that due to its flexibility allows us to cut all metal materials types in the most different forms, reflecting the CAD/CAM system, which is incorporated in this type. We have laser types (CO2 and optical fibre) which allows to transform raw materials like carbon steel (20mm), AlCl materials (10mm), aluminum (8mm), brass and titanium (5mm), and copper (4mm). The maximum dimensions are 3000mm x 1500mm.





Welding



We perform highly technically competent processes such as TIG, MIG, MAG, electrode and resistance, in materials such as: carbon steel (iron) and aisi (stainless steel).



Bending

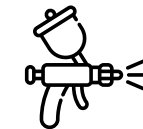


Toolpath complements its range of transformation processes with new CNC machines for the bending , with the ability to form the thickness between 0.5mm up to 15mm. We have systems and accessories that allow finishing the parts with drilling, threading, stamping and welding operations in order to finish the formed parts.

Additional services

Toolpath works to uphold quality standards and to improve efficiency. In order to respond with effectiveness to the challenges posed by its customers, **Toolpath** has developed an exclusive system which customizes its range of services:

Painting



We have electrostatic painting / lacquering service to complement our parts. Lacquering is an electrostatic painting process composed of several processes or stages, which result in a painting of the highest quality.

This process consists of effectively protecting ferrous materials against potential chemical or mechanical reactions that could damage their composition.

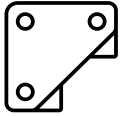
Heat treatments



In order to improve the mechanical properties of the parts, ETMA performs the following heat treatments: Heat treatments with core and superficial hardening: Tempering, Carburizing and Carbonitriding. Heat treatments with release of tension and hardness correction: Tempering and Annealing.



Surface treatments

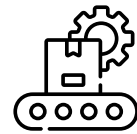


In order to increase the corrosion resistance of the parts, the conductivity or to improve the appearance, Toolpath is capable of performing the following surface treatments:

- Electrolytics with deposition of: Zinc, Zinc-Nickel, Nickel, Copper, Silver, Tin
- Chemicals for: phosphatising and oxidation
- Dipping / Spin: Zinc flake coating, top coats and sealants
- Dehydrogenation: performed in all parts of medium and high carbon
- Degreasing / Wash: in closed chamber with perchloroethylene fulfilling European standards
- Deburring / Polishing with abrasives: ceramic and porcelain

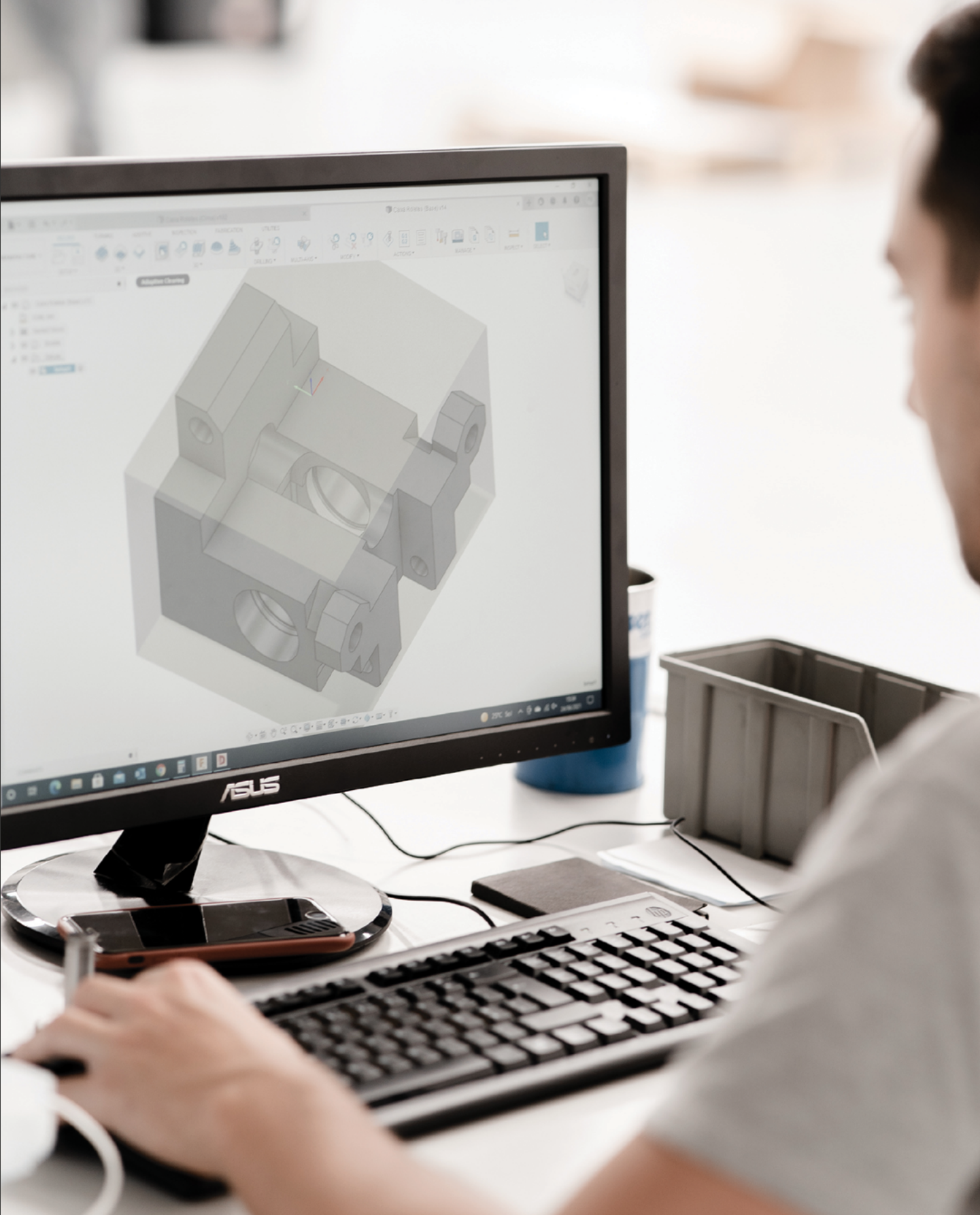


Assembly



In your daily basis, we offer a wide range of solutions for assembly, doing tailormade assembly in what is needed.





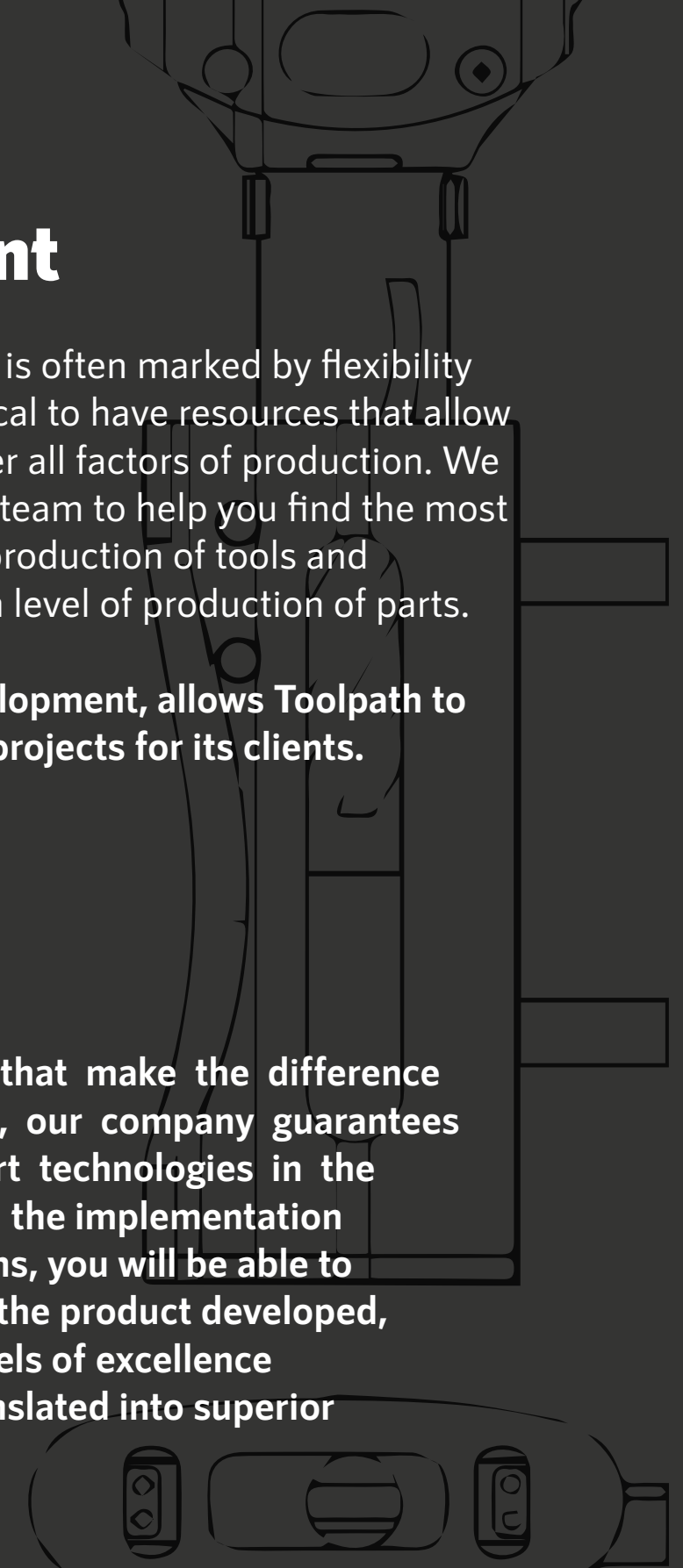
Innovation and development

In a sector where differentiation is often marked by flexibility and speed of response, it is critical to have resources that allow you to have effective control over all factors of production. We have an engineering and design team to help you find the most cost-effective solutions for the production of tools and equipment, assuring a minimum level of production of parts.

Working in the 2D and 3D development, allows Toolpath to carry out the most challenging projects for its clients.

Quality

Quality and rigor are factors that make the difference against the competition. Thus, our company guarantees that by having state of the art technologies in the production area, together with the implementation of ISO9001 quality certifications, you will be able to achieve complete control over the product developed, being possible to guarantee levels of excellence at all stages of the process, translated into superior levels of quality.

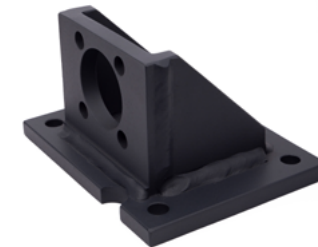
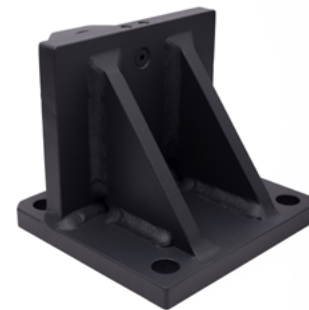


Value chain

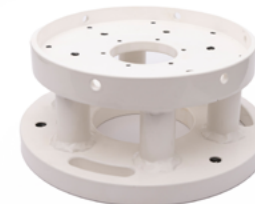
CNC machining

Sheet metal

Turning

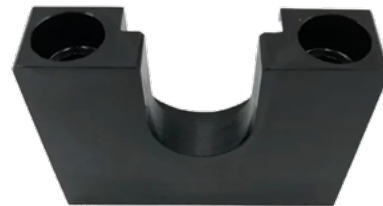


Milling

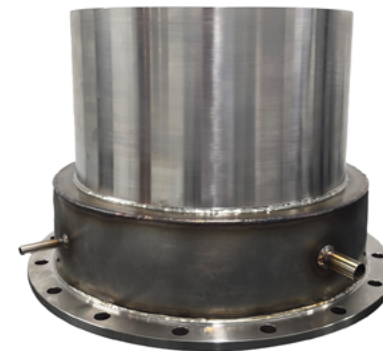


Value chain

Surface treatment



Assembly



ToolPath

SOLUTIONS

Talk to us

tel.: (+351) 253 716 372

email: info@toolpathsolutions.com

Headquarters

Address: Avenida Visconde S.Januário
nº200, 4740-416

Esposende

