

COMPANY



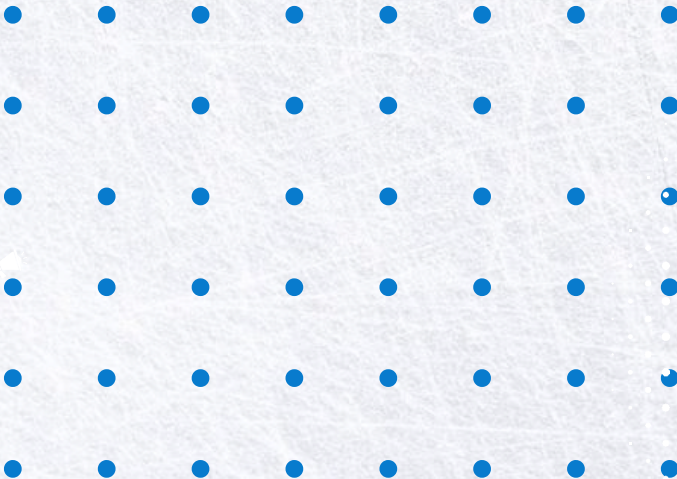
HOW

2024

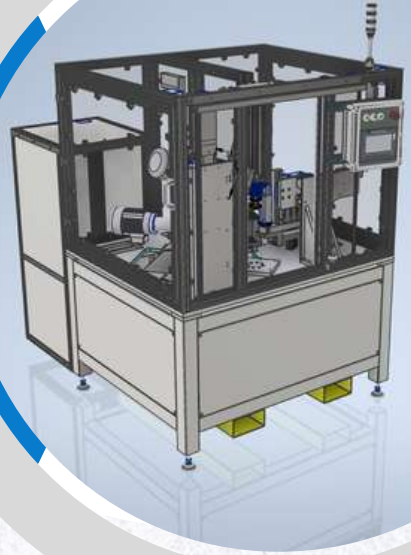
ABOUT US



Since our establishment in 2021, and with years of engineering expertise, we focus on creating designs optimized for manufacturing and easy assembly across devices, machines, and production lines. Our commitment to flexibility ensures that we tailor our solutions to align with your unique needs, driving exceptional results.



**OUR
SERVICES ARE
DESIGNED TO
DO JUST
THAT!**



DESIGN AND ENGINEERING

Industrial Design
Machine Design
Sheet metal Design
Reverse engineering

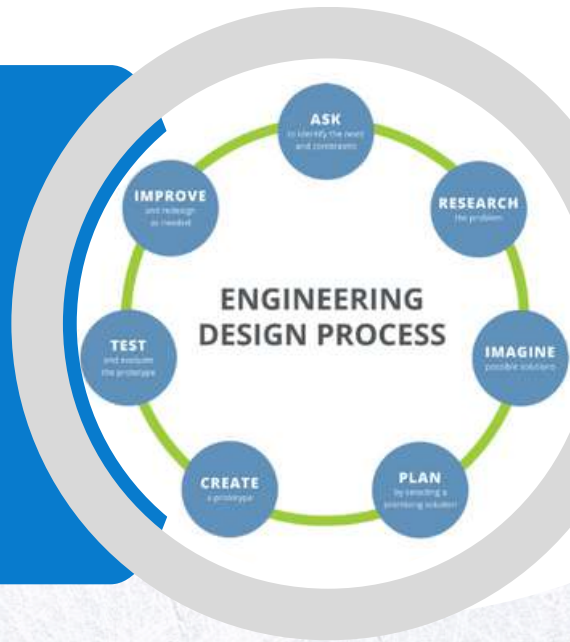
PROTOTYPING

3D Printing
CNC Milling

CUSTOM-DESIGNED DEVICES

Custom Fixture
Custom aluminium frame
Simple assembly fixture

DESIGN AND ENGINEERING



Our expertise is rooted in years of experience developing and designing production equipment for various industries and clients with unique requirements. This background has given us a deep understanding of complex industrial needs and the ability to tailor solutions effectively. We have undertaken diverse projects, each with its own challenges and opportunities, enhancing our ability to innovate and adapt to new situations confidently.

PROTOTYPING

Prototyping through 3D printing involves creating a physical model of a design using additive manufacturing technology.

This method allows for rapid, cost-effective development of prototypes, enabling quick iterations and testing of concepts before final production.



Equipment

5 FDM 3D printers

Bed Dimension

- 350x350x400
- 235x235x235
- 250x250x266

CUSTOM-DESIGNED DEVICES



We aim to provide our customers with a comprehensive solution that covers design, manufacturing, assembly, and commissioning. Additionally, we plan to expand our service offerings by developing devices and machines with reduced complexity. This will help build stronger partnerships and open up new opportunities for collaboration.

FIXTURES

PACKING STATION

CONVEYORS

ROBOTS'GRIPPERS

PRESS STATION

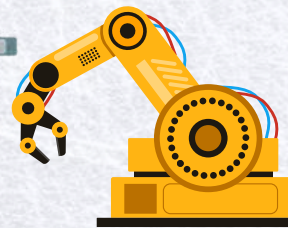
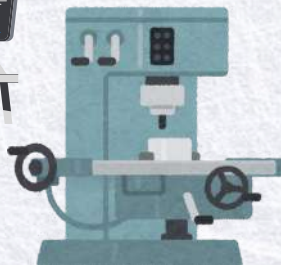
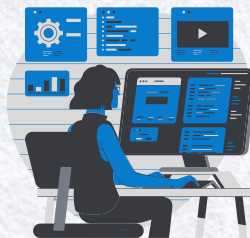
LASER MARKING

LEAKAGE STATION

**HEATING MOLDING TOOLING
STATION**

SCREWING STATION

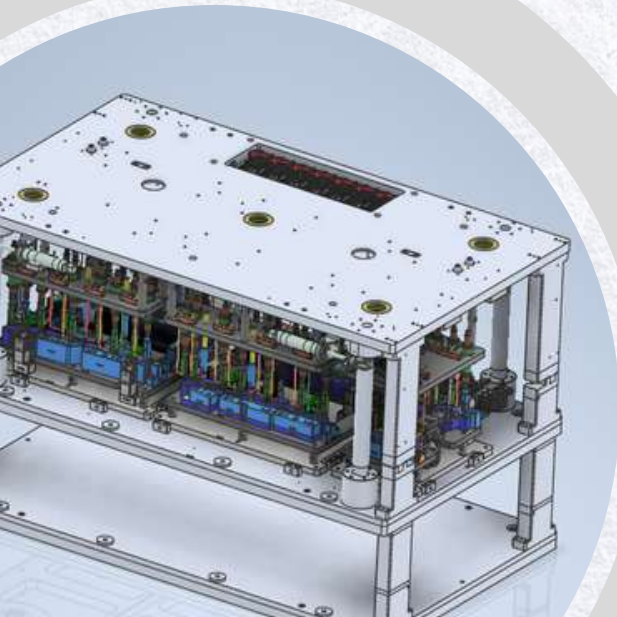
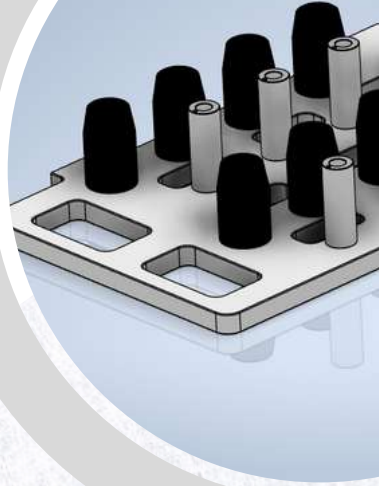
TABLE OF PROJECTS



FIXTURES

The detection nests used for checking the conformity of the parts before assembly process.

All of those nests has PY role, by the concept is ensured that only one type of part and in a unique position can be put it inside. Where mechanical positioning is not possible, sensors or vision systems can be used.



Equipment used

- Sensors
- Electrical test probes
- Mechanical and electrical components

PACKING STATION

A packaging station is a dedicated workspace equipped with tools and machinery designed to streamline the process of assembling, filling, sealing, and preparing products for shipment or distribution efficiently and accurately.

Equipment used

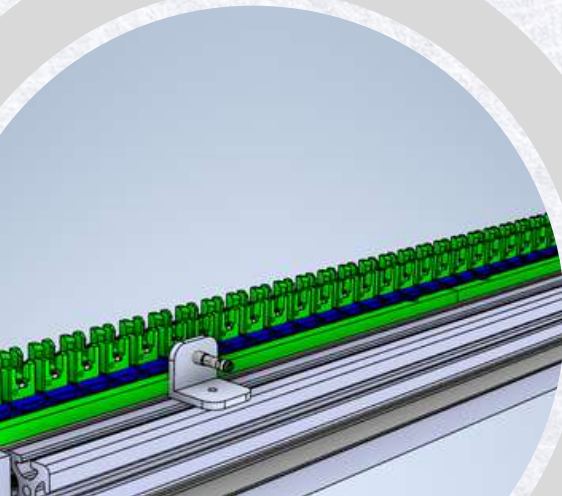
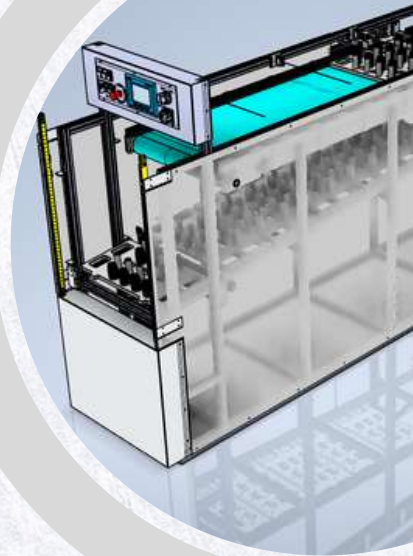
- Sensors
- Vision System
- Scanning system
- Labeling equipment
- Mechanical and electrical components



CONVEYORS

Conveyors can be incorporated into the production line to transport products between different processes.

They can also be utilized for tasks involving robot integration.

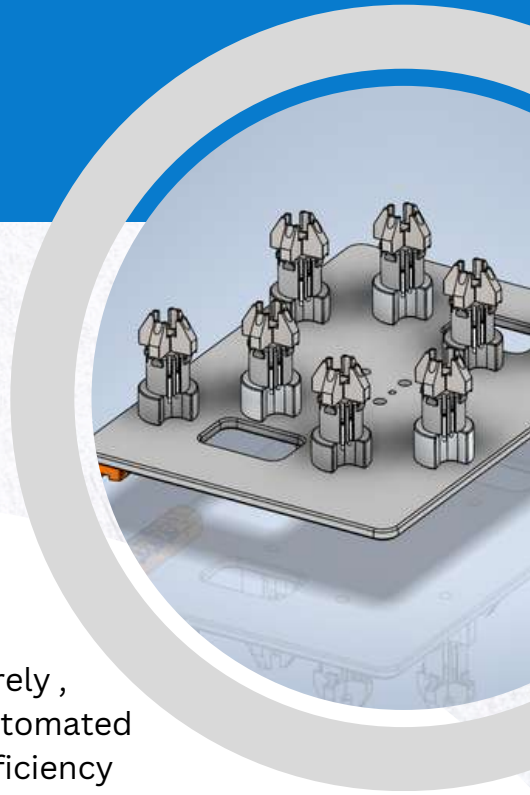


Equipment used

- Sensors
- Electrical motors
- Pneumatical cylinders
- Mechanical and electrical components

ROBOTS' GRIPPERS

Robots' grippers are specialized end-effectors designed to grab securely , manipulate, and handle objects in automated systems, enhancing precision and efficiency in tasks such as assembly, packaging, and inspection.



Equipment used

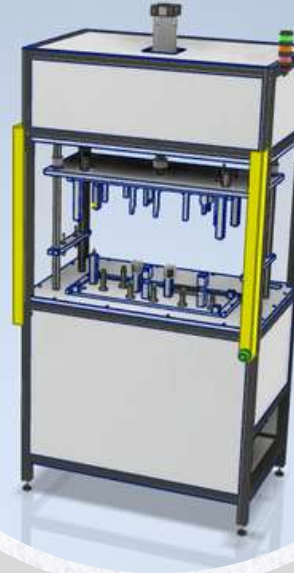
Sensors

Tool changer system

Pneumatical and electrical grippers

Mechanical and electrical components

PRESS STATION



Regardless of which industrial application you are using your press for, setting it up with custom tooling and fixture packages can help increase production efficiency and provide consistency needed for the highest quality product standards. Take a look at a few examples of our presses with custom tooling and fixtures.

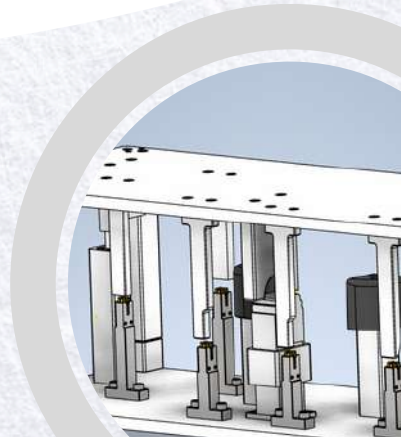
Equipment used

Sensors

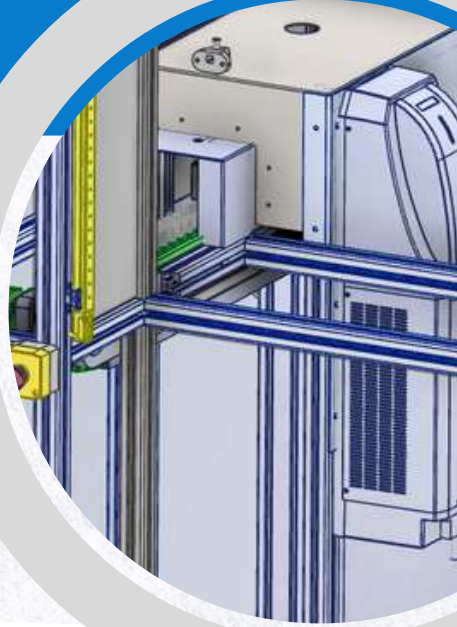
Pneumatical press system

Interchangeable fixture

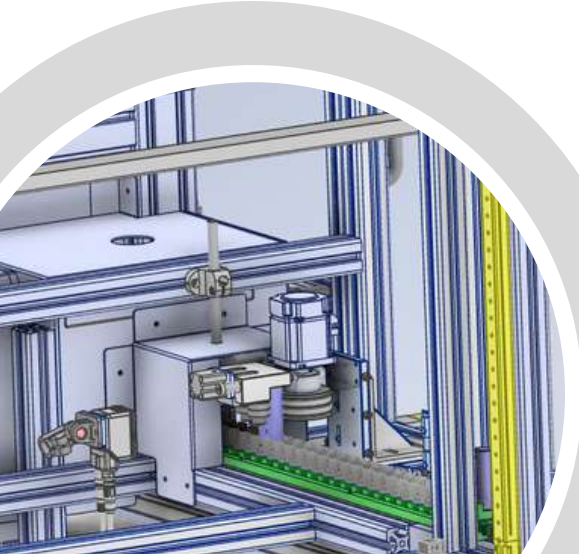
Standard electrical connection



LASER MARKING



The purpose of the station is to facilitate cooling through laser marking of components. Additional processes can be incorporated, such as pressing multiple components together, performing electrical checks, and more.



Equipment used

Sensors:

Electrical Test Probes
Laser marking equipment
Other mechanical and electrical components

LEAKAGE STATION

Equipment used

Sensors

Ateq, Ceta devices for test

Electrical test probes

Other mechanical and electrical components



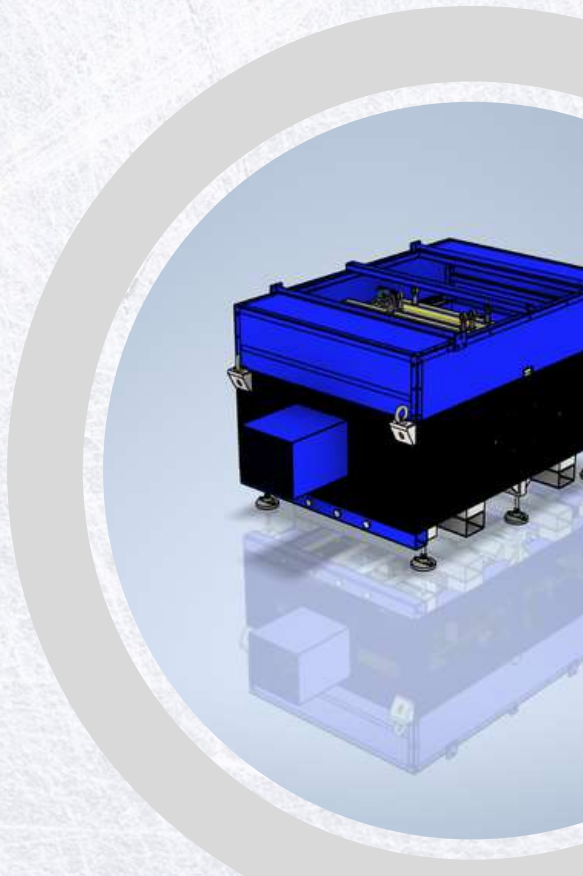
Liquid-filled products or systems must go leak testing before further processing. Creating a reliable, efficient leak testing method that fits seamlessly into your manufacturing process requires a tailored approach. Optimizing this process may involve using a combination of tests, such as vacuum decay, pressure, pressure decay, and capillary flow rate testing.

HEATING MOLDING TOOLING STATION

The purpose of this station is to preheat the tool before it is mounted onto the machine. The design features welded steel tubing and three substantial plates that house electrical resistance. An electric motor is included to adjust the gap between these plates.

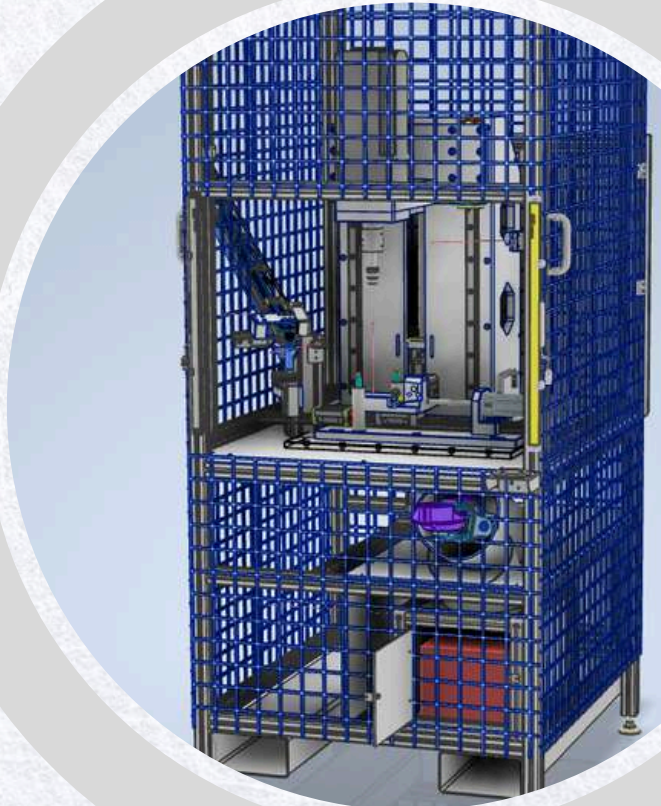
Equipment used

- Sensors
- Electrical heating probes
- Other mechanical and electrical components



SCREWING STATION

The purpose of the screwing station is to perform the assembly of multiple components onto a product. These stations may include scanners for DataMatrix codes, a PY nest for the product, a product blocking system, and one or more screwing systems.



Equipment used

- Sensors
- Electrical screwdrivers
- Other mechanical and electrical components
- Pneumatically cylinders

CUSTOMERS

alutec

Tungsten
Engineering

HAWEMA

Industrial
BWA
Automatic S.R.L.

MTG METROM
TRADING
UN PARTENER DE ÎNCREDERE

HUTCHINSON®



office@mdc-bv.ro
+40 0742 804 751