



ARFINO

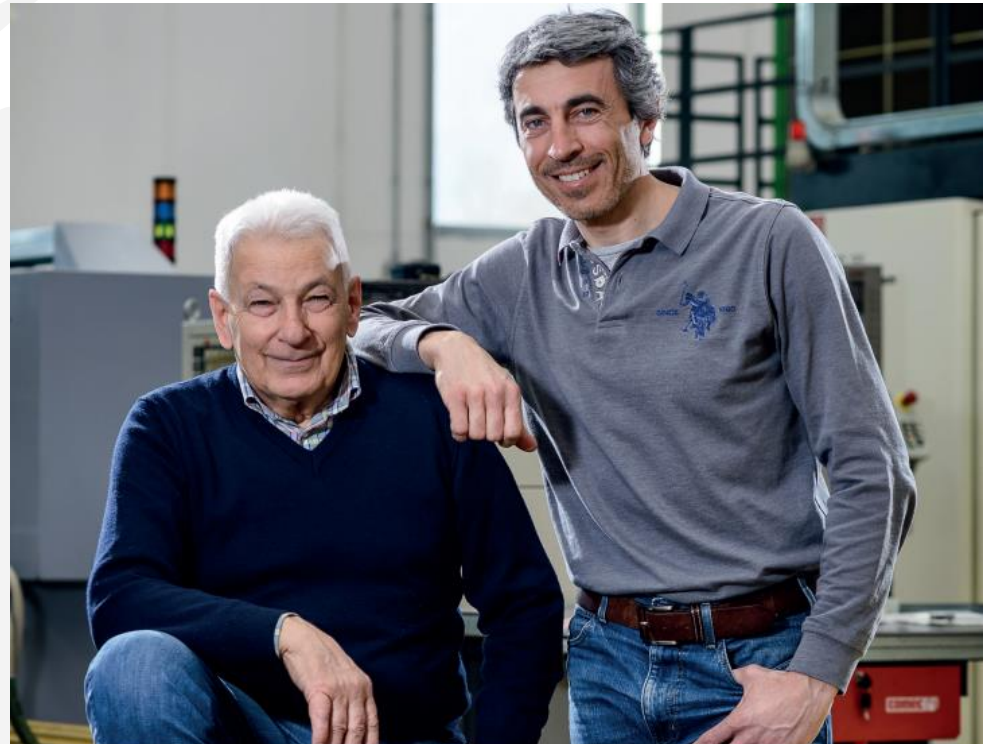
PRECISION TURNING TECHNOLOGY



Company

Officine Arfino SRL was founded in 1974 by Mr. Flavio Arfino and has 50 years of experience in the production of turned and milled metal components for plumbing, HVAC+R and precision mechanics.

The company's main characteristics are a strong focus on quality and customer needs, commitment to constant growth and continuous improvement, respect for the environment.



Brass Components

Through strategic partnerships, the company ensures the exclusive use of high quality brass alloys such as CW614N, CW617N, CW601N, CW602N, CW625N, CW626N, CW713R among others.



Lead-Free and Low-Lead Brass

For over 10 years we have been processing low-lead and lead-free brass alloys that comply with the latest REACH and RoHS regulations.

These alloys are widely used to reduce environmental impact and are particularly suitable for use in drinking water applications.



CW724R - CuZn21Si3P
CW725R - CuZn33Pb1AlSiAs
CW511L - CuZn38As
CW510L - CuZn42
CW509L - CuZn40
CW508L - CuZn37
CW727R - CuZn35Sn1P
eZeebrass

Bronze

Bronze is recognized for its durability and offers benefits such as wear and corrosion resistance.

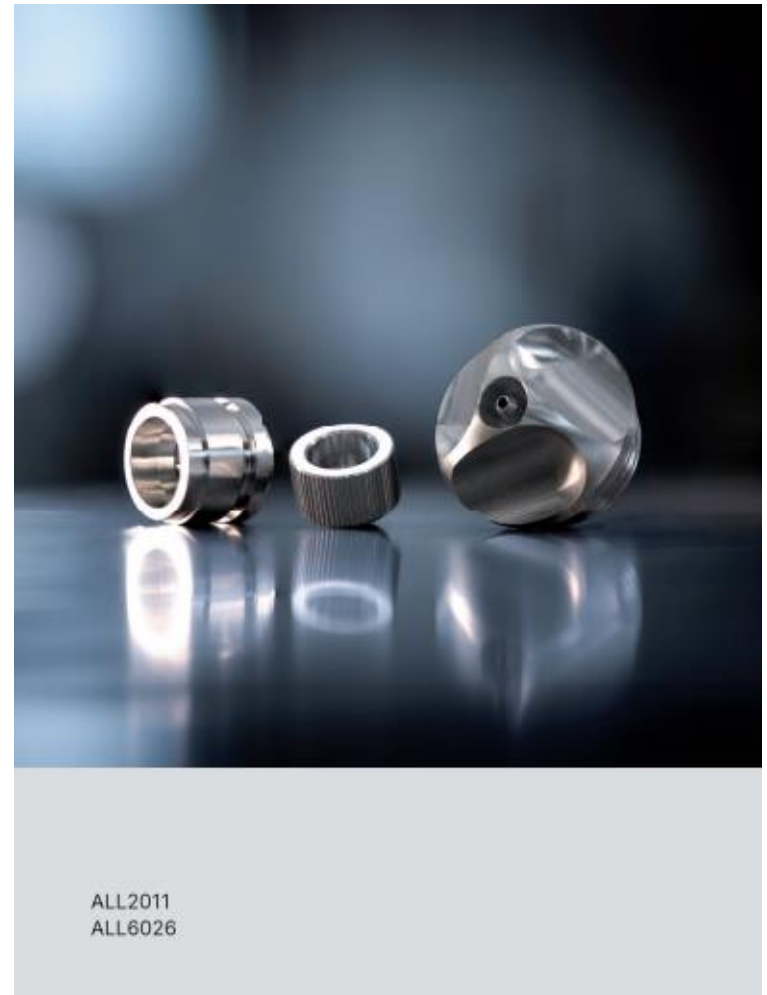
We manufacture high precision bronze components using the latest CNC machining. We can produce complex parts with tight tolerances and achieve superior quality finishes.



CC493K - CuSn7Zn4Pb7-C
CC483K - CuSn12-C
CC470K - CuSn4Zn2Ps-C
CC499K - CuSn5ZnsPb2-C

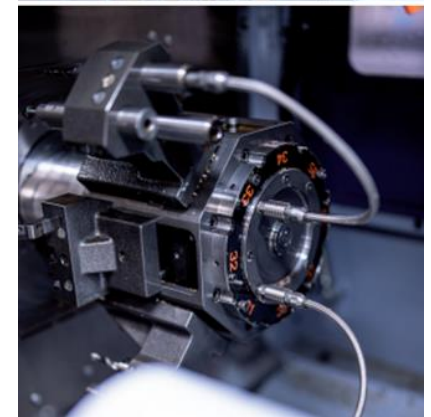
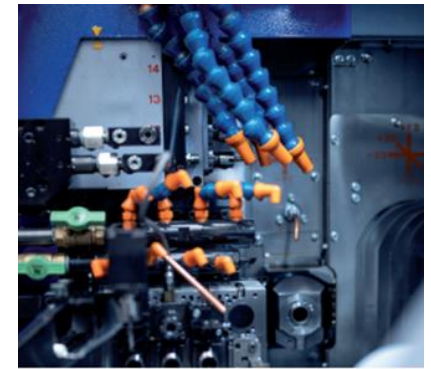
Aluminum

Aluminum is an interesting alternative to our main products. Our ability to machine different aluminum alloys, combined with a wide range of surface finishes, allows us to produce high precision and quality turned components that respond to the most varied uses in different sectors.



Technology

The advantages of CNC technology combined with those of cam-controlled machines are applied for processing a wide range of precision components tailored to customer requirements.



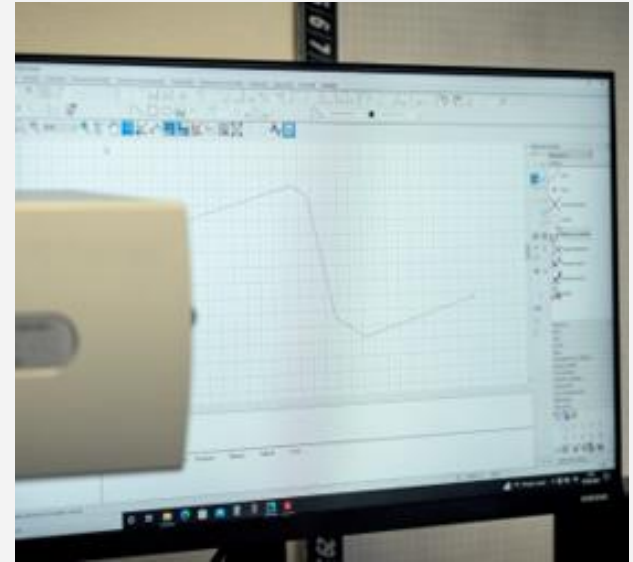
Technology

- No.1 CNC Multi-spindle Lathe INDEX MS 40/8 (bar Ø40 max.)
- No.2 CNC Multi-spindle Lathe INDEX MS 40 (bar Ø40 max.)
- No.1 CNC Multi-spindle Lathe INDEX MS 32 (bar Ø32 max.)
- No.3 Multi-spindle Lathe MORI-SAY TMZ 6/42 (bar Ø50 max.)
- No.1 Multi-spindle Lathe GILDEMEISTER GMC 20 (bar Ø28 max.)
- No.2 CNC Single-spindle Lathe INDEX G200 YB (bar Ø65 max.)
- No.1 CNC Single-spindle Lathe INDEX C200 (bar Ø65 max.)
- No.2 CNC Single-spindle Lathe INDEX ABC (bar Ø65 max.)
- No.2 STAR SV-20R Lathe (bar Ø20 max.)
- No.1 CNC Single-spindle Lathe GILDEMEISTER SPRINT 42 (bar Ø42 max.)
- No.1 CNC Single-spindle Lathe BIGLIA B470 YSM8 (bar Ø80 max.)
- No.1 CNC Single-spindle Lathe MAZAK SQT 250 MS (bar Ø60 max.)
- No.1 5-axis CNC Single-spindle Lathe CHIRON MILL 800 (bar Ø92 max.)
- No.1 Multi-spindle CAM Lathe GILDEMEISTER GM20 (bar Ø22 max.)
- No.2 Multi-spindle Lathe MORI-SAY 32 (bar Ø34 max.)
- No.1 NABERTHERM Furnace (heat treatment)
- No.1 PERO V01 Washing Machine (cleaning with perchloroethylene, vacuum process, ultrasonic and steam degreasing)
- No.1 IFP KP.HMA Washing Machine (modified alcohol cleaning, vacuum process, ultrasonic and steam degreasing)



Metrology equipment

Coordinate Measuring Machines (CMM) with optical measurement and touch-trigger probe, profile projectors and measuring instruments from the best brands.



Surface Treatments

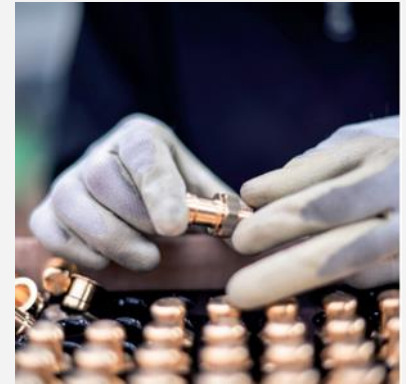
- Heat treatments available upon request.
- For several years we have been collaborating with trusted partners, ensuring excellent surface treatments that perfectly meet every need.



Services

Assembly

We also offer an assembly service for turned parts, which always ensures a high standard of quality and precision



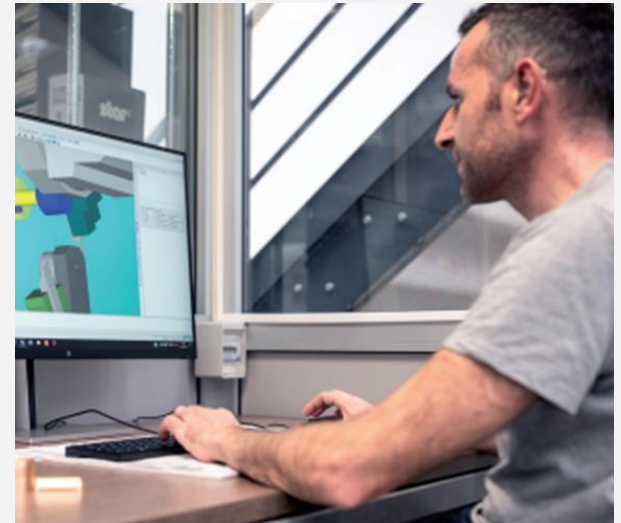
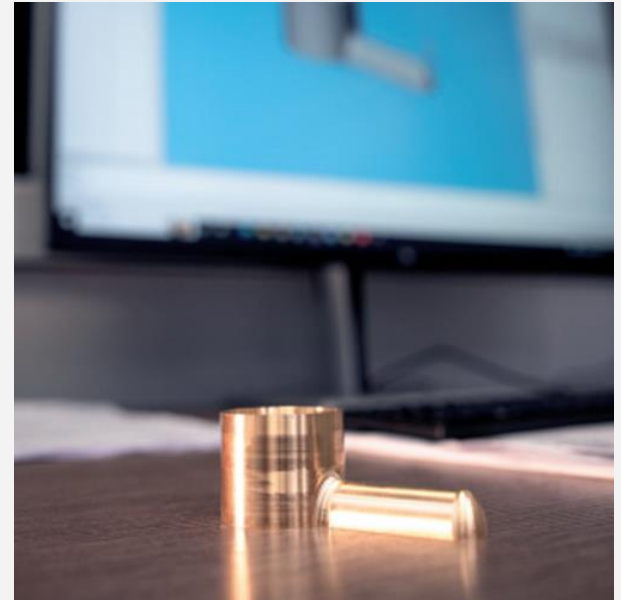
Packaging

We offer careful packaging, all carried out within our production process. Each component undergoes rigorous quality and functional tests before being packaged.



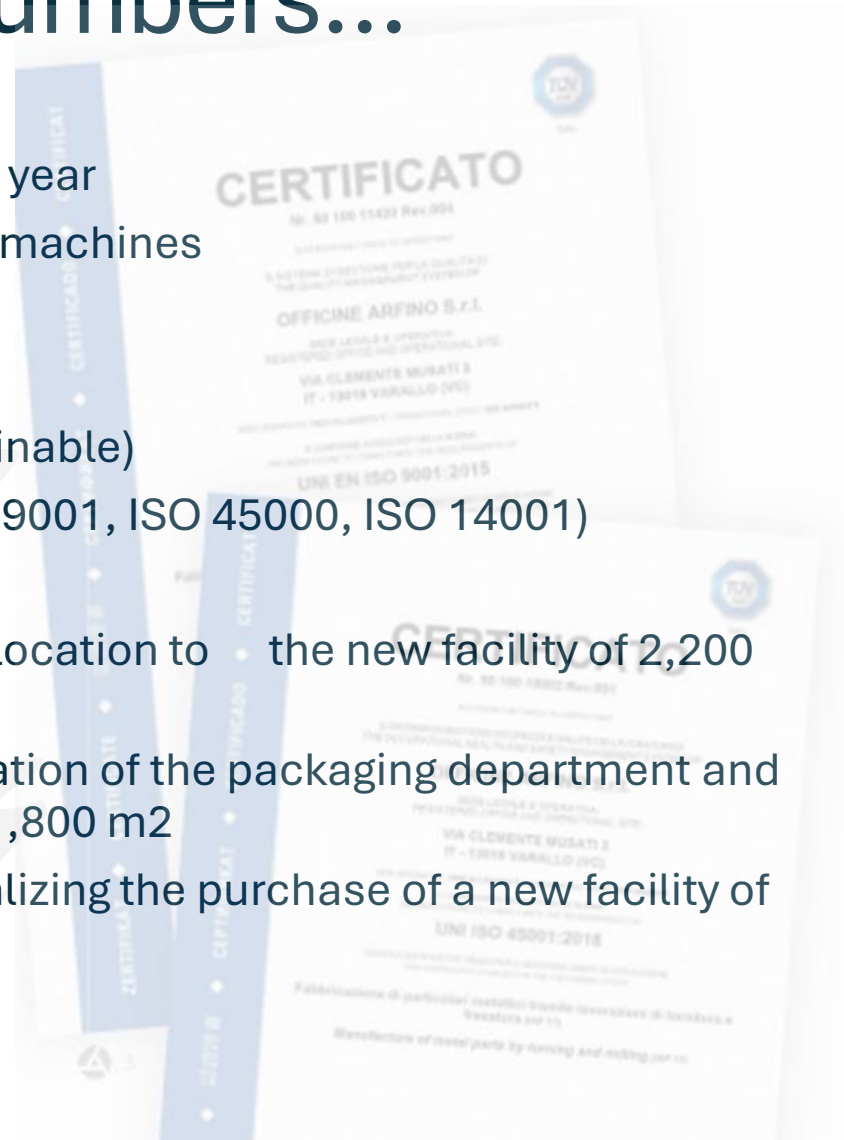
Co-Desing

Our technicians collaborate closely with customers' R&D departments, integrating our production skills with design needs, to develop products that guarantee a high standard of technique, quality and competitiveness.



Officine Arfino in numbers...

- 13,000,000 pieces produced per year
- 25 latest-generation specialized machines
- 42 Employees
- 7 processed metals
- 20 different brass alloys (5 sustainable)
- 3 ISO System Certifications (ISO 9001, ISO 45000, ISO 14001)
- 2 Production plants:
 - Year 2008 → construction and relocation to the new facility of 2,200 m2.
 - Year 2021 → purchase and relocation of the packaging department and warehouse in a facility of 1,800 m2
 - Year 2024 → we are currently finalizing the purchase of a new facility of 3,000 m2.



Environmental sustainability



- Experience in processing low-lead and lead-free alloys, in compliance with the latest Reach and RoHS regulations.
- Use of recyclable materials
- Reduction of CO2 emissions
- Environmentally oriented corporate culture



Contact

OFFICINE ARFINO Srl Unipersonale

Offices:

Via C. Musati 3 - Z.I. Roccapietra
13019 Varallo Sesia (VC) – Italy

Warehouse:

Via Al Sesia 2 - Z.I. Roccapietra
13019 Varallo Sesia (VC) – Italy



Tel: +39 0163.52465



Fax: +39 0163.54015



Info: info@officinearfino.it

www.officinearfino.it