



---

***Since 1982***

*Committed to provide the fastest and smartest  
way to turn your ideas into innovative products.*

**COMPANY PROFILE**

# INDEX

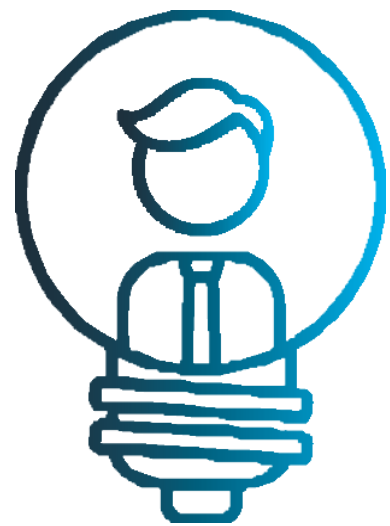
03	THE COMPANY
04	VISION TO THE FUTURE
05	COMPETENCES
06	DESIGN CONTROL PROCESS
07	CO-DESIGN & MOLD DESIGN
08	PRECISION MOLD MAKING
09	TOOLSHOP
10	INJECTION MOLDING
11	CLEAN ROOM ISO 7
12	BUSINESS DIVISIONS
	1. Automotive
	2. Medical
	3. Industrial
13	BI-INJECTION SOLUTIONS
14	WORLDWIDE SALES
15	LAST AWARDED PROJECTS
16	GLIMPSE TO THE FUTURE

**Strictly Confidential**

T.S.T. Plastics Technologies Property

# The Company

OUR PASSION - YOUR INNOVATIONS



## Foundation

1982

Start the adventure



## Team

Over 56

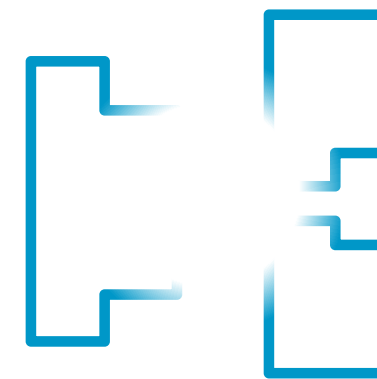
Collaborators



## Certifications

CERTIFIED ISO CERTIFIED ISO CERTIFIED IATF

9001 13485 16949



## Projects

Over 80

Projects/tools year



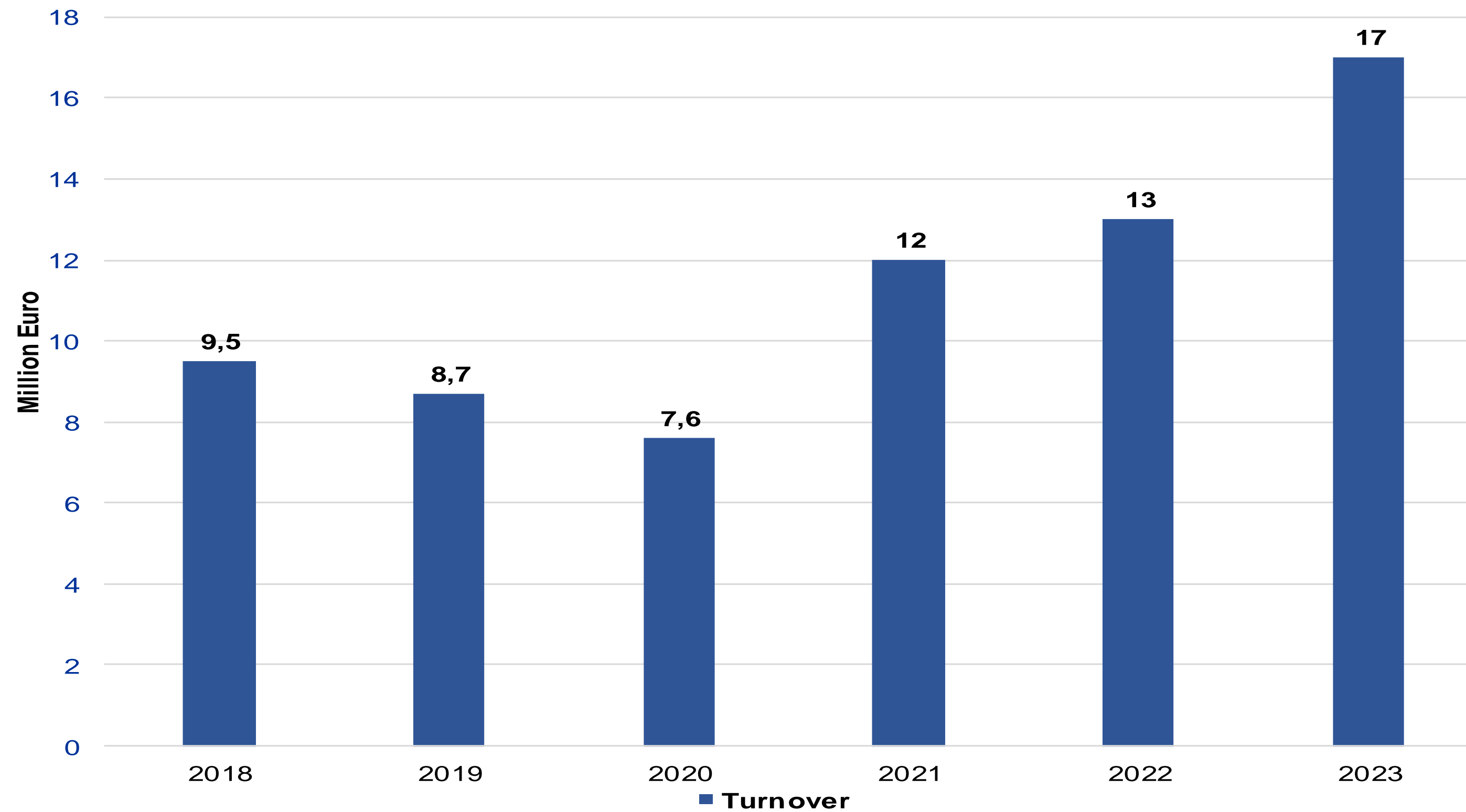
## Revenues

Average growth +12%

17 Mio € year

# Vision to the Future

COMPANY **OVERVIEW** - **GROWTH** PATH



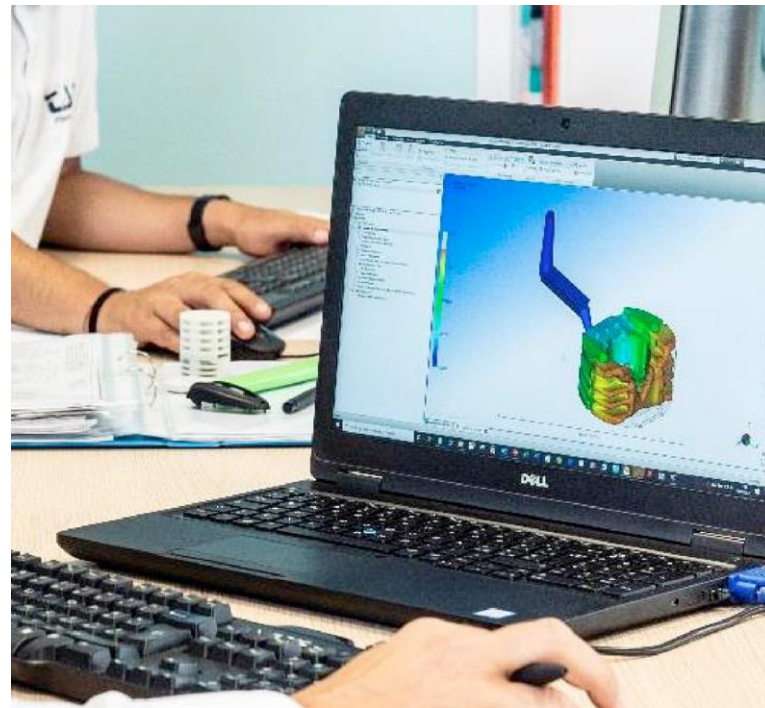
# Competences

A UNIQUE **TAILOR-MADE** SERVICE



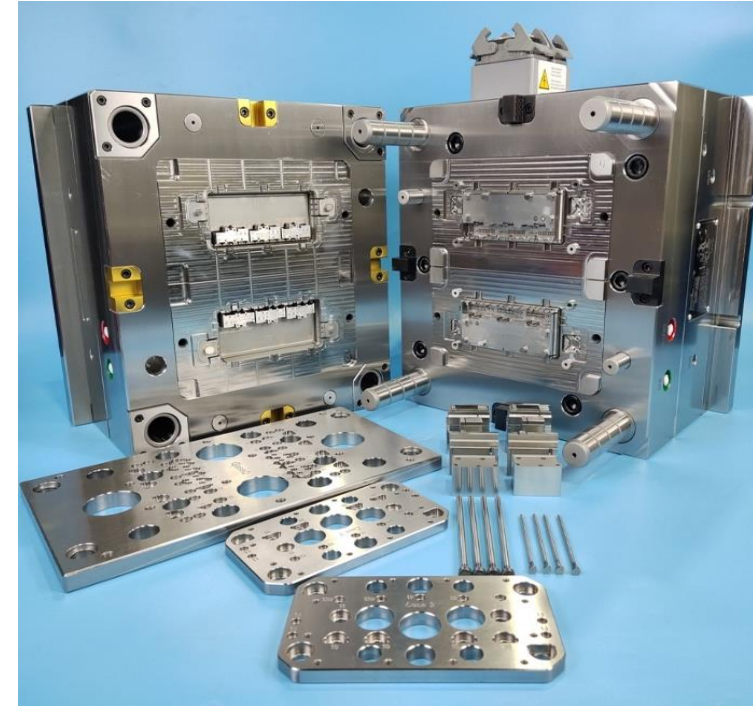
## Co-Design

Engineering Products and  
Streamlining Production  
Process Industrialization



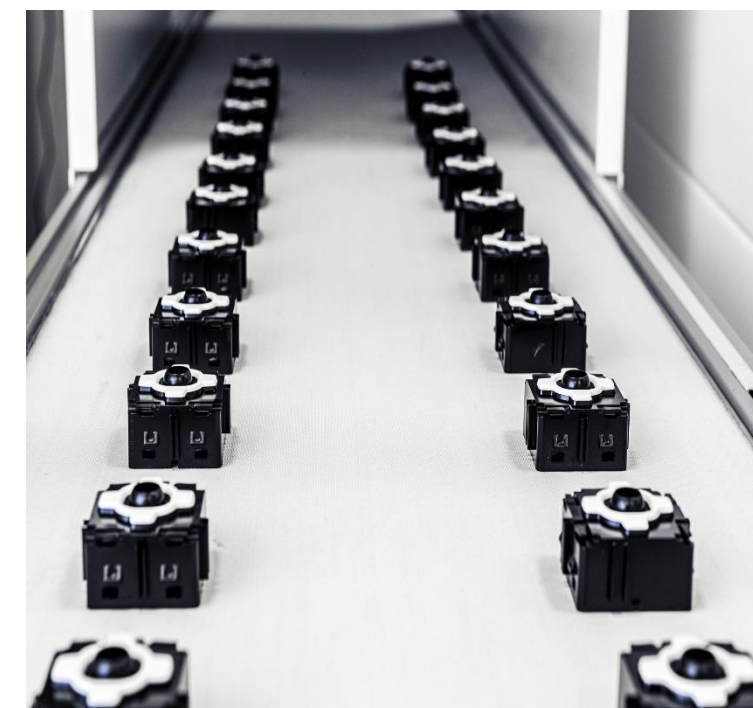
## Mold Design

Design of single and multi-  
cavity molds (1K, 2K, 3K) and  
related equipment



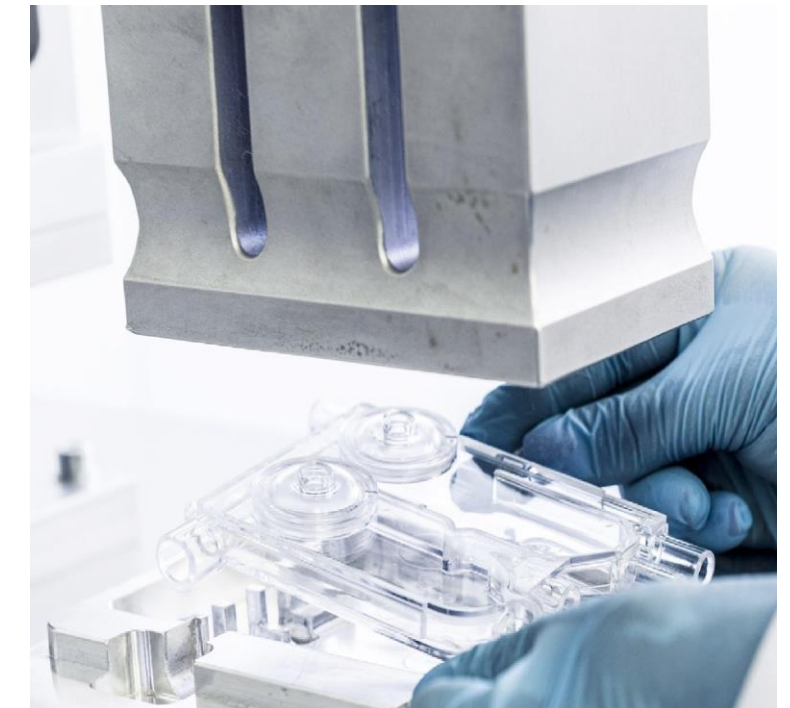
## Mold Making

Molds construction & related  
equipment (i.e. spare parts,  
grippers, lines)



## Injection Molding

Mold trials up to mass  
production of mono-injection  
(1k), bi-injection (2k) molding

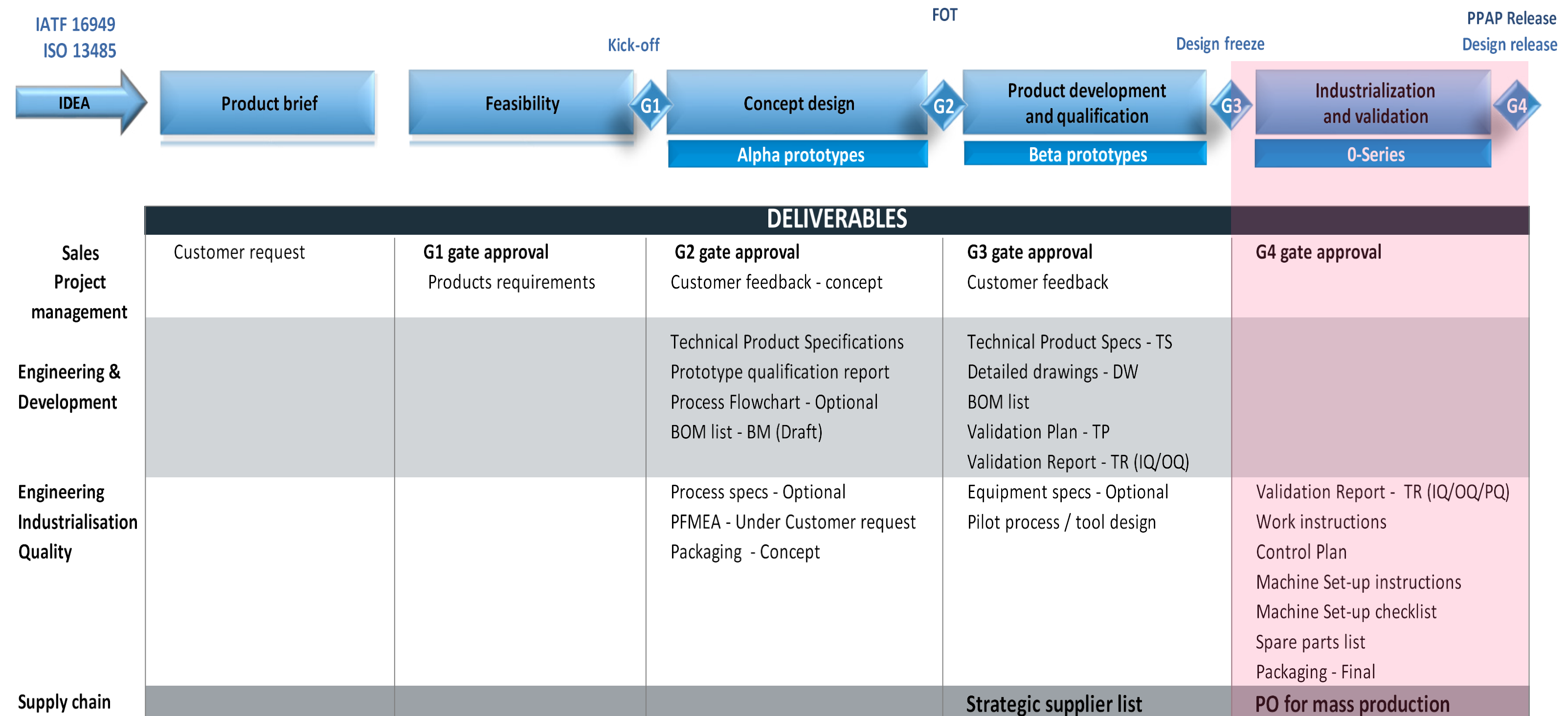


## Finitures

Manual & automatic  
assemblies, ultrasonic  
welding, chrome, painting

# Design Control Process

FROM **CUSTOMER REQUEST** TO THE **MASS PRODUCTION**



# Co-Design & Precision Mold Design

ENGINEERING **KNOW-HOW** - **DEVELOPMENT** SUPPORT

## Development

Lean design fosters cooperation for optimal product performance and efficient solution development

## MFA

Simulate manufacturing design with Autodesk Adviser Ultimate for enhanced production efficiency and accuracy

## Reverse Engineering

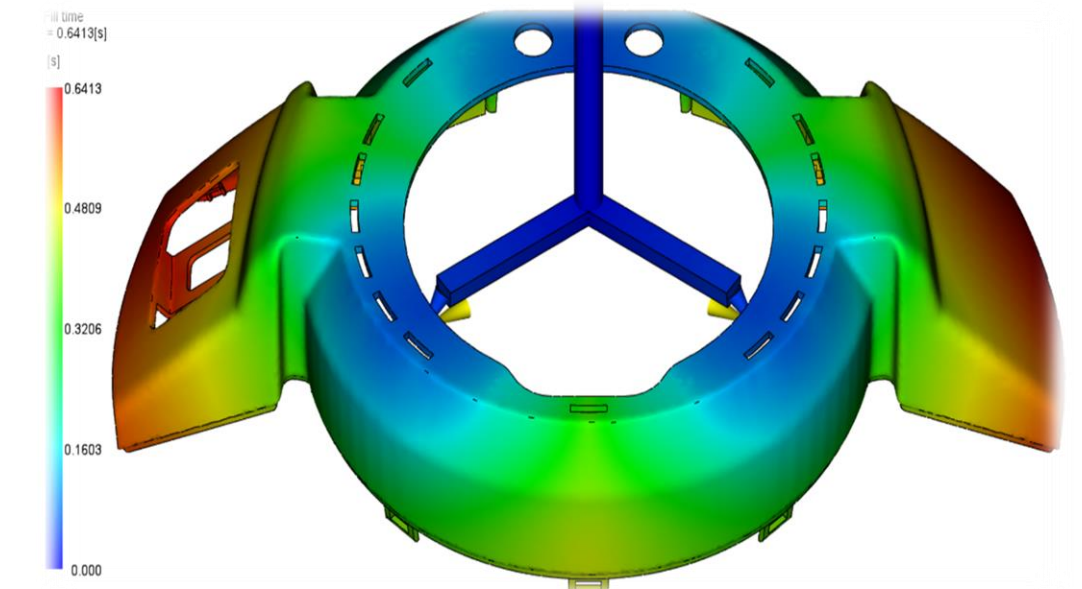
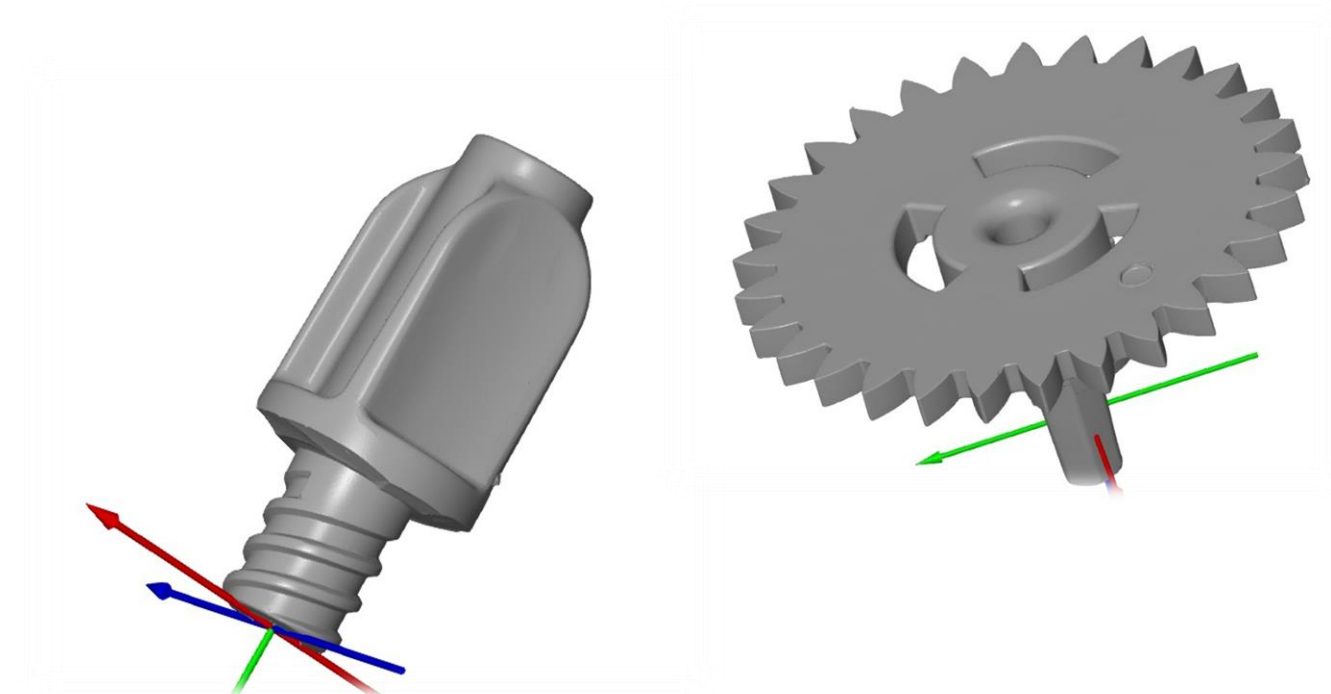
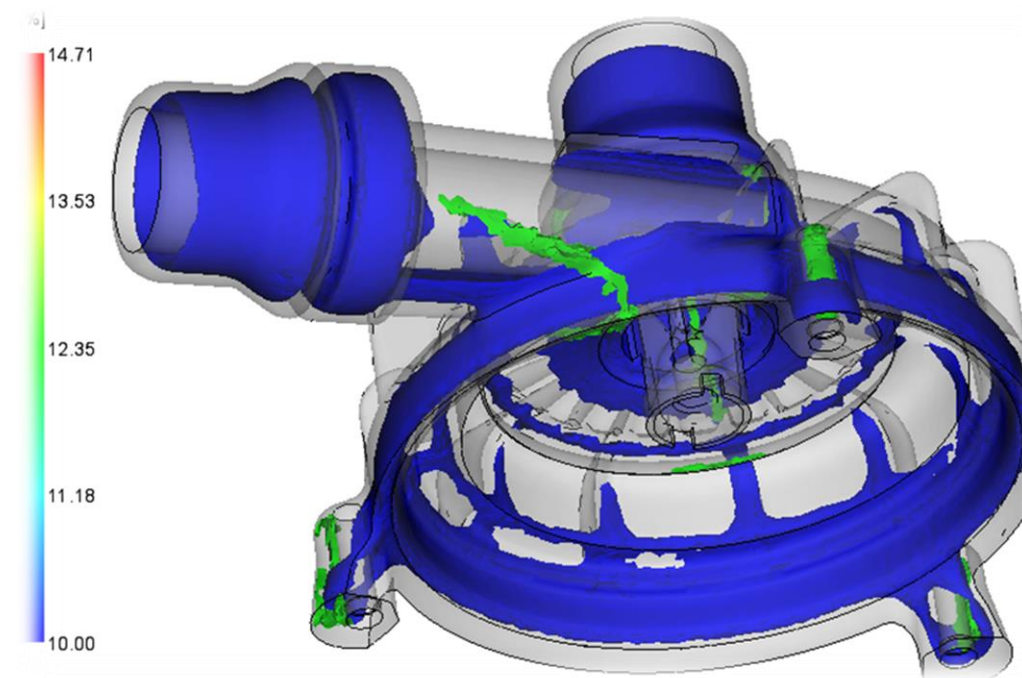
Analyze component thickness, strength, cost, and durability for comprehensive engineering insights

## Metal replacement

Material change and new design for cost savings and improved performance

## Additive manufacturing

Rapid prototyping melts materials, creating objects through layered plastic stratification for efficient development



# Precision Mold Making

PRODUCT **DESIGN** – **TOOLING** CONSTRUCTION



«Customer Oriented»  
Experienced engineering team



Flexibility to improve  
productivity and capacity



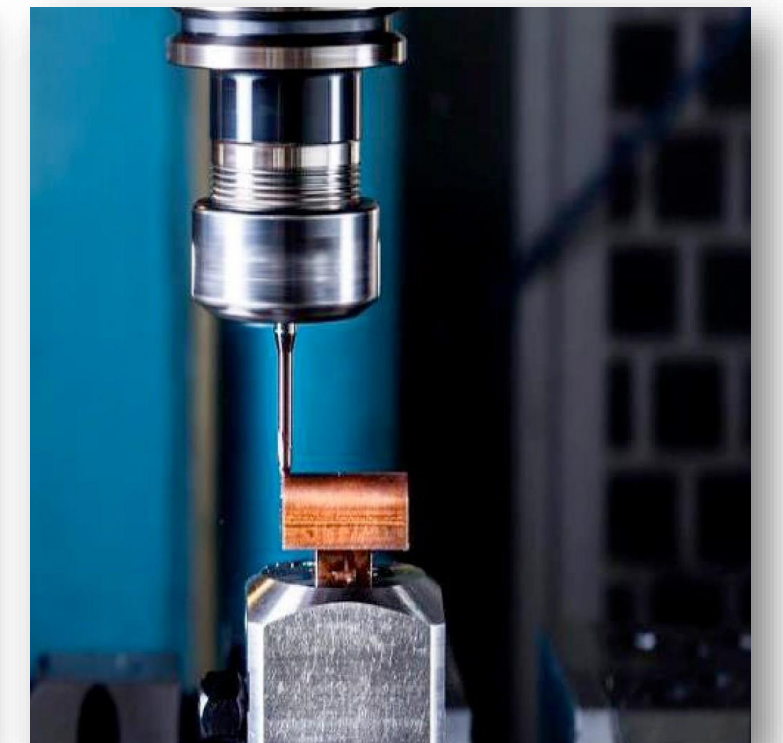
Precision technical molds  
components and spare parts



Short lead time  
Focus on time-to-market

# Toolshop

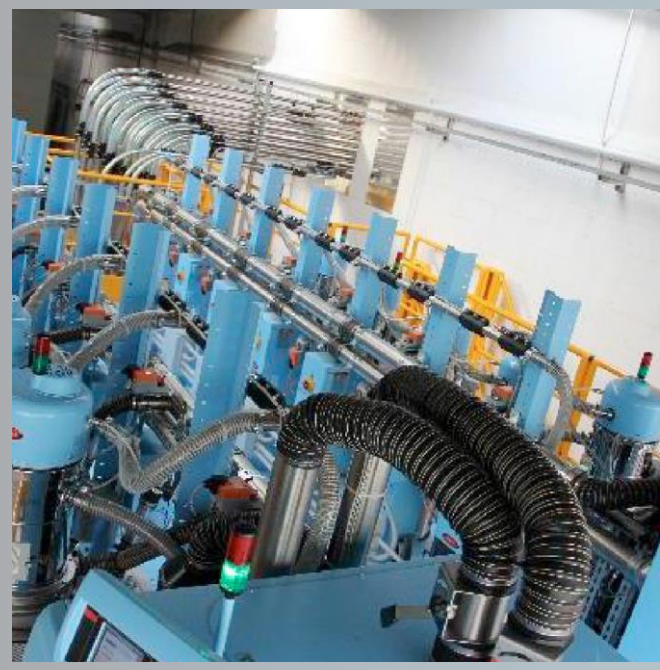
ADVANCED **TECHNOLOGIES** – **OVER 20** MACHINES



- High speed 3-5 axis milling machines • EDM machines WIRE machines • Tangential grinding machine
- Numerical control machine tools • Management System Software • Automatic robotized centre

# Injection Molding

3 PRODUCTION AREAS **CLEAN ROOM | GREY ROOM | INDUSTRIAL**



1

## Feeding System

Centralized PLC controlled conveying system for raw material's humidity control



14

## Robotized systems

Fully and semi automated processes for overmolding & assemblies



9

## Twin shot IMM (2K)

Clamp force: 90 to 175 Tons Brand: Engel, BM, Boy, Sumitomo



14

## Single shot IMM (1K)

Clamp force: 25 to 250 Tons Brand: Engel, BM, Boy, Sumitomo



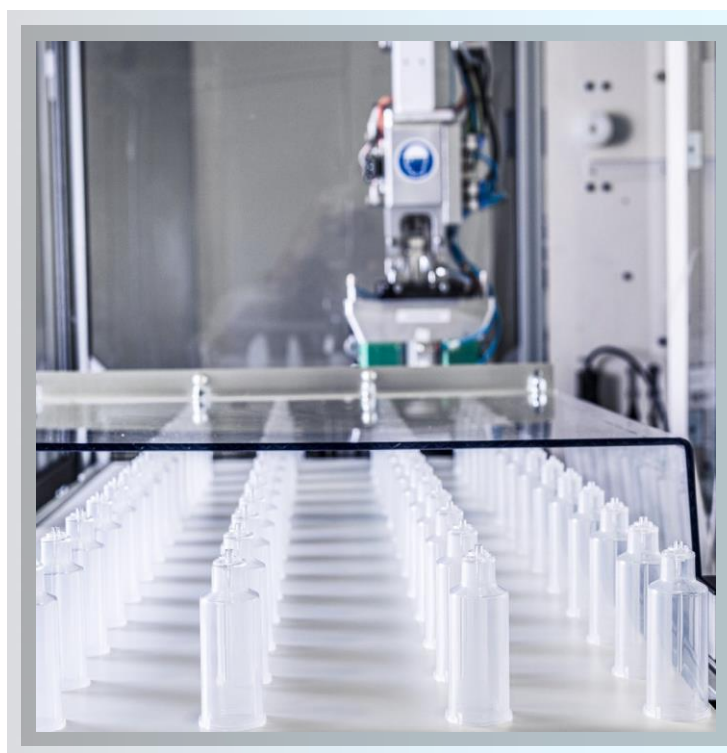
7

## Full electrics IMM

Clamp force: 28 to 300 Tons Brand: Engel, Sumitomo

# Clean Room Iso 7

## INJECTION MOLDING PRODUCTION ENVIRONMENT



- Plastic medical devices production • IQ-OQ-PQ process validation • TSs Quality & Engineering
- 6 IMM Single (1k) Shot IMM • 1 IMM Twin (1k) Shot • N. 4 Robotic lines • Ultrasonic Welding Technology

# Business Division

# MARKETS OVERVIEW | APPLICATIONS | TECHNOLOGIES | PRODUCTS

## / 01 AUTOMOTIVE



- Battery Management Systems
- E-mobility solutions - Battery Interruption
- Safety belt retractors - Buckles - Pretensioners
- Air-bag components
- Water pumps - Oil pumps - Engines parts
- Powertrain components
- Dashboard commands keys / Switches & Paddles
- Closure system parts
- Solar and fuel sensors
- Fluid control systems components

## / 02 MEDICAL



- Hemodialysis & dialysis components
- Pumps - Stators - Covers
- Over molded Needles - Syringes – Spikes
- Fluid Control Systems - Ultrasonic Welded Parts
- PCR Plastes & box
- Prefillable syringes in COP/COC
- Components for wearable devices & disposable IV Roller clamp
- Light Guides - Impellers - Components
- Connectors - Luer Locks - Caps
- Cardio Surgery components - Filters
- Vials - Caps - Housings – Valves – Housing for ostomy system

## / 03 INDUSTRIAL



- E-bike solutions
- Industrial - Home Appliances parts
- Precision Gears, over molded
- Levers - Workings
- Connectors - Coils - Keypads
- Washing-up dispensers
- Combustion system components - Gas modulators
- Measuring sensors - Water Meter

# 2K Bi-Injection Solutions

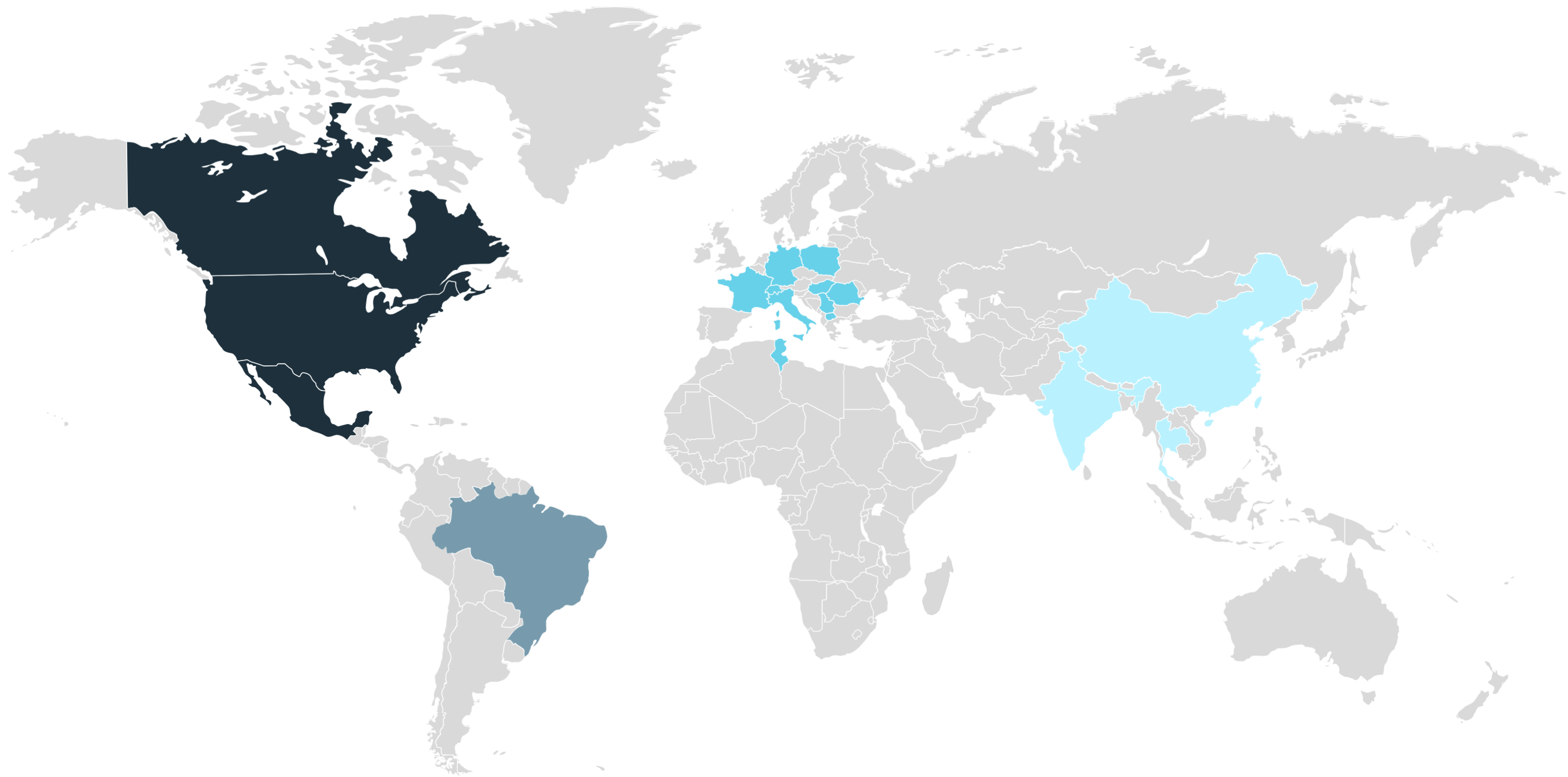
## TECHNICAL & AESTHETICAL COMPONENTS



- Medical | Automotive | Industrial products • 30.000.000 pieces produced every year • Technological injection molding machines
- Cost saving solutions • Elastomers & plastics materials

# Worldwide Sales

**EXPORTING** MORE THAN 150.000.000 PIECES GLOBALLY



**NAFTA**

United States of America,  
Canada, Mexico

**LATAM**

Brazil

**EMEA**

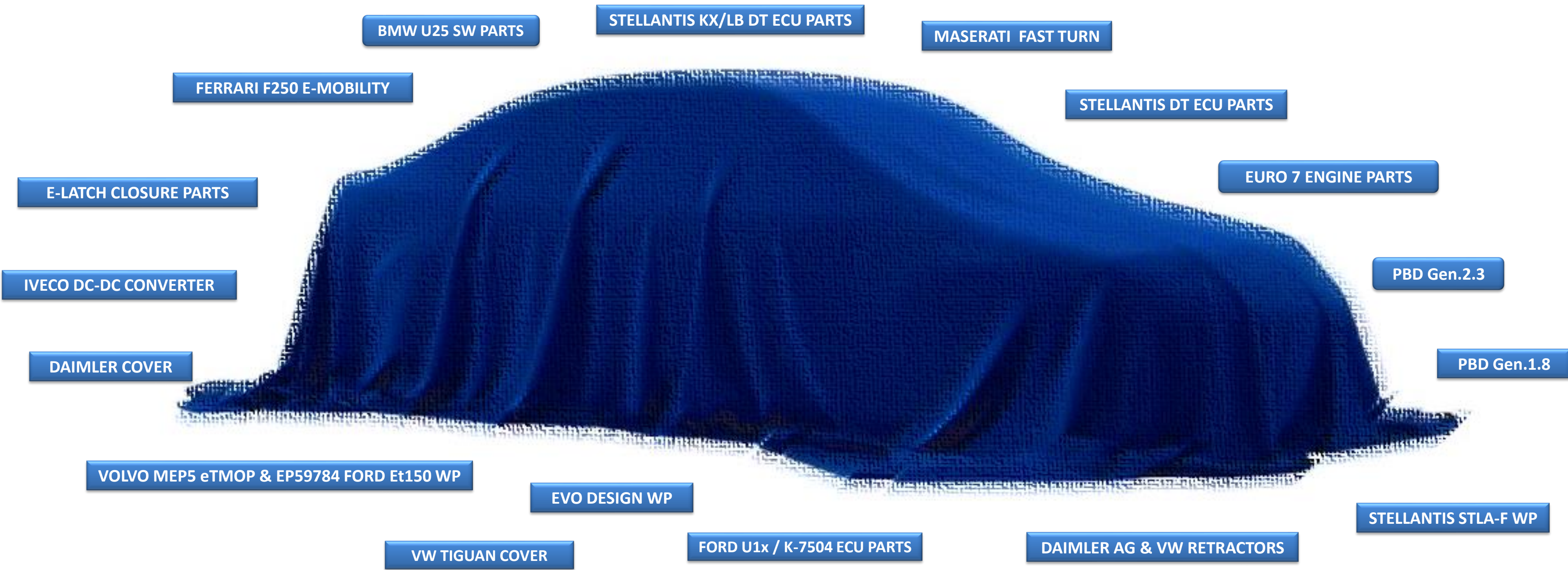
Italy, Serbia, Bulgaria Francia,  
Germany, Poland,  
Romania, Macedonia, Slovenia,  
Hungary, Switzerland Tunisia,  
Czech Republic

**ASEAN**

India, China,  
Thailand

# Last awarded projects

MAIN **PROJECTS** AWARDED



# Glimpse to the future...

INVESTMENTS PLAN TO SUPPORT **BUSINESS GROWTH**

## Investment plan

- Clean room enlargement
- New raw material storage area
- New building investigation (offices restyling, in-house toolshop relocation, production area widening)
- New Full Electrics Injection molding machines (1K/2K)
  - Organization chart reinforcement
  - Restyled web site & SEO optimization
  - Preliminary process towards ISO14001
  - Cyber security reinforcement





***Plastics Technologies***

*40 years of experience in the mold  
making and molding of technical plastics  
components*



---

[sales@tstgroup.it](mailto:sales@tstgroup.it) - [www.tstgroup.it](http://www.tstgroup.it) - +39 011 98 26 911 - +39 349 6838044

Headquarter - Via Venezia, 34/S - 10088, Volpiano - Torino - ITALY