



Kywa
Engineering



About us

We are a Portuguese company operating in the metallurgy sector, we are specialized in **CNC machining** for prototyping and pre series.

Our philosophy



Dedication to our customer

For us, the customer is our top priority. We believe that a close relationship with the customer is the key success factor for a solid partnership. Which is why we adapt our activity to each of our partners, in order to offer a tailored service as well as high quality.

No minimum quantity

We built our company according to the needs of our customers, which led us to focus on quality over quantity. We are specialized in small series that require a rigorous quality service.

Quality

The source of our motivation comes from our desire to provide an outstanding service. Our main activities focus on the precision of production and the control process. We have forged a team of professionals that are detail oriented, seeking excellence and strictness in control of each pieces that we produce.

Compliance with deadlines

Due to the importance given by our customers to delivery times, we consider this as one of the fundamental principles of our company. The history of our exports is an example of this, as we have recorded a very high percentage of compliance over the last six years.

Prototyping Department



One of our major departments since the beginning of our foundation.



- Small quantities
 - Single unit productions
-

We have optimized our production in order to decrease to the minimum our set-up time. By doing so we are prepared to develop different types of pieces using several raw materials, in an efficient way.

Pre-series and complex production department



We created this department due to the increased orders from our customers, who over the last few years have felt the need to increase their stock volume and have achieved a greater volume of sales.

- Under 1000 units per part

With a palletise machine we were able to:

- increase our competitiveness
- reduce the delivery time (24h working machine)
- guarantee the quality standard repeatedly



Turning department

Most recent extension



The creation of this department meets a need that exists since our creation and which is directly linked to the projects of the other departments.

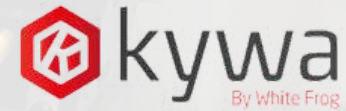
This machine is equipped with:

- 2 turning points;
- Simultaneous milling capacity;
- Automatic feeder.

These features allow us to be quicker in set-ups, more versatile due to its ability to produce more complex parts. We are able to be more efficient and competitive on a production scale because of its automatic feeder.



Our fleet of machines



3 axis

Daewoo Mynx 500

Dimensions:
1000 x 500 x 500

DMC 63v

Dimensions:
630 x 500 x 500

DMC 100v

Dimensions:
1000 x 700 x 600

5 axis

Hermle C600U

Dimensions:
400 x 350

Hermle C800U

Dimensions:
600 x 500

5 axis Palletized

Mikron UCP 600 Vario - 7 Pallet

Dimensions:
350 x 300

Turning

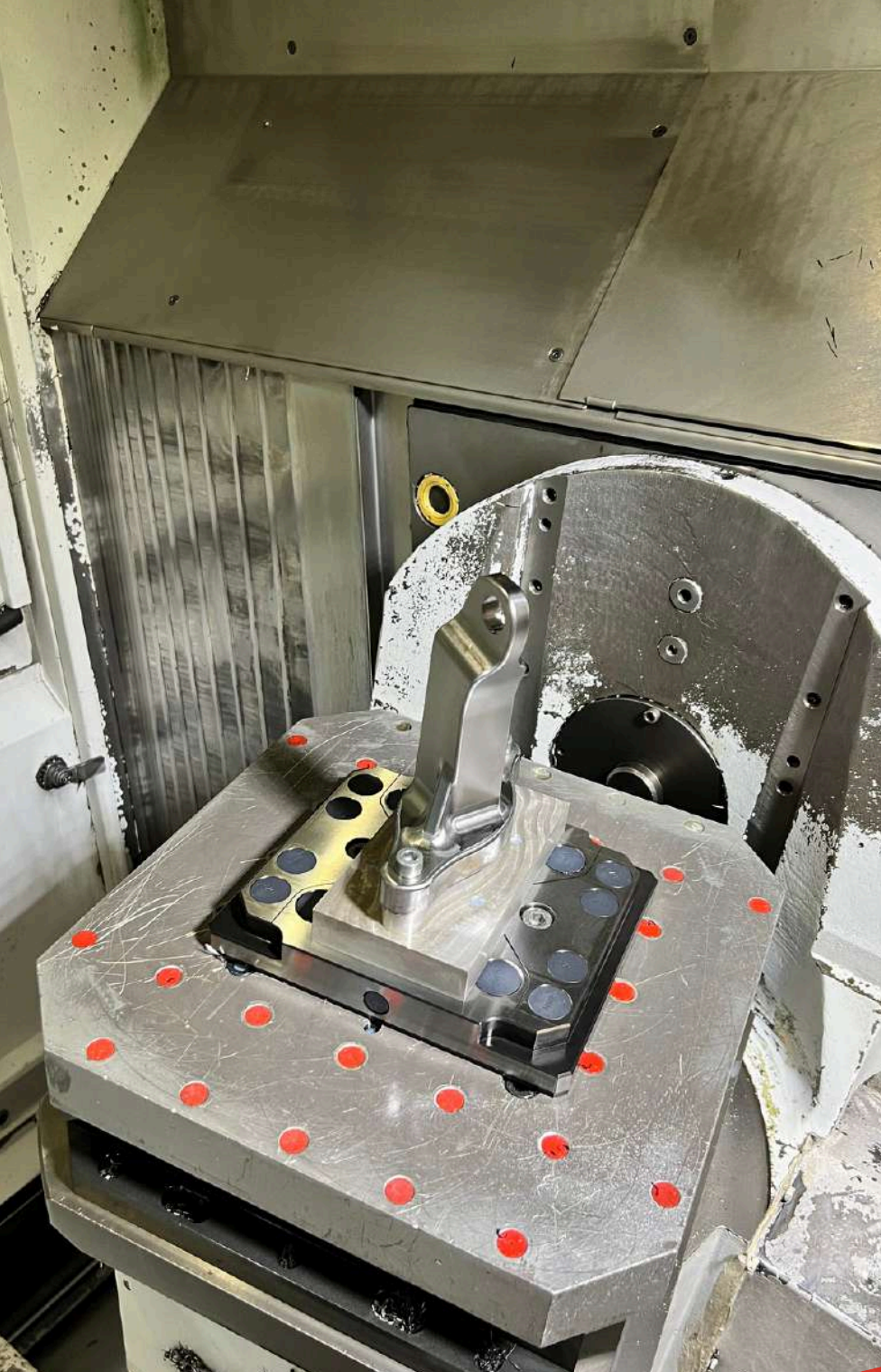
Doosan MX 2100 LST

Dimensions:
540 x 1500

Our capacity

Control

- Capable of measuring all axes up to 900mm;
- Mitutoyo LH-600E measuring column;
- High precision granite table 800x500;
- External micrometers;
- Three point internal micrometers;
- Limit gauges;
- Standard steel blocks.

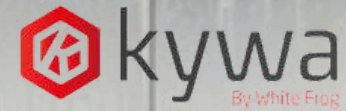


Precision machining services:

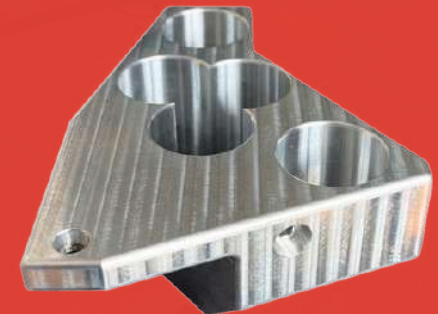
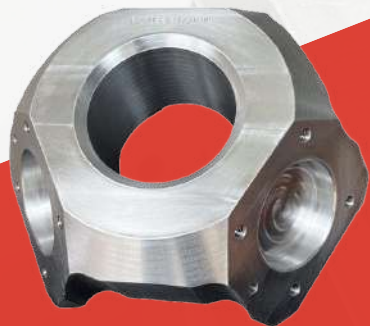
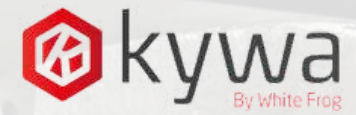
- CNC milling
 - CNC turning
-

Strict control process in 3 steps:

- **First step:** Dimensional control by the CNC operator after fabrication of the part;
- **Second step:** Finishing unit and visual control by a specialized operator;
- **Third step:** Visual and dimensional inspection performed at the quality control center. In a controlled environment, the knowledge of an engineering professional associated with specific tools is essential in order to guarantee quality.



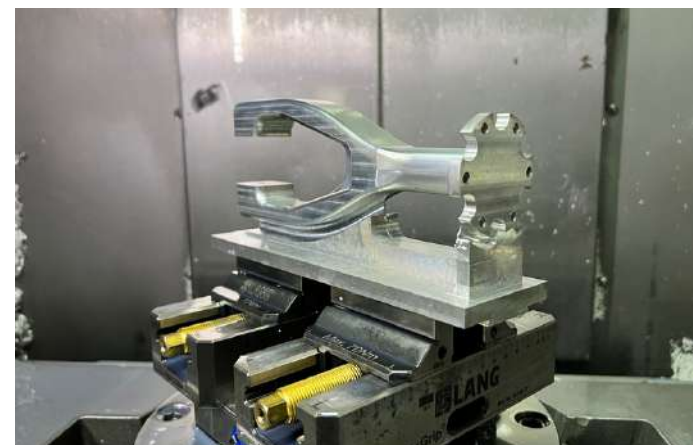
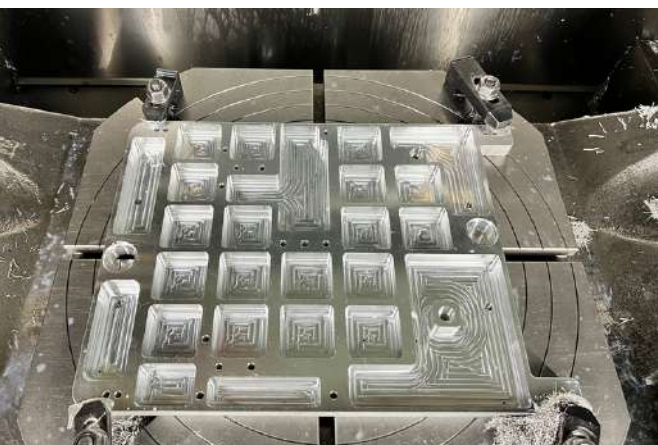
Some examples of our work



Raw Materials

Throughout our journey, we have developed a **portfolio of clients from different countries** and fields of activity, which has allowed us to gain experience in several types of materials, such as:

1. Steel (CK45, 2311, RPM 32)
2. Stainless steel 304 and 316
3. Aluminum (5083, 7075, 6082, 2017)
4. Plastic (PA6G, PE500, PEHD, POM)
5. Titanium



Contacts

A: Rua Manuel Sousa Oliveira, N° 83/85
4795-476 Campo (São Martinho)
Portugal

E: export@kywa.pt

M: (+351) 939 068 517

P: (+351) 252 843 276

www.kywa.pt

