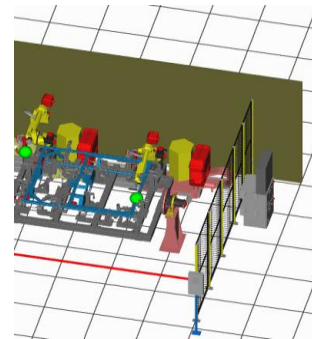




Who are we ?

C&F Manufacturing is a sheet metal manufacturing company with experience and expertise in the production of a wide range of sheet metal products. Our interest is in medium and high volume serial production of components, covers, racks or assemblies. We are proud partners of major players in the IT industry - automotive - refrigeration - air conditioning and wind energy. All this means that we are a reliable partner for long-term partnerships in the B2B segment. Our resources are stable and trustworthy. We can prove this with our customer portfolio. C&F Manufacturing is part of the C&F Group, which was founded in 1989 in Ireland and is fully Irish-owned. This group generates annual sales of over \$150 million and employing over 1,000 people worldwide.



C&F Group

- Global company established in 1989, Irish owned
- Group sales revenue of \$150+ million per year
 - Employs over 1000+ people worldwide

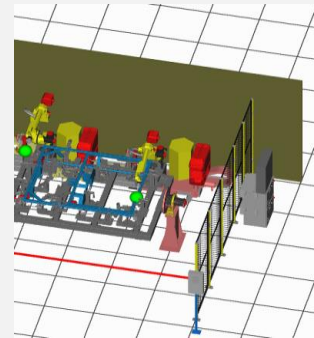


C&F Divisions

C&F Tooling



Contract Manufacturing





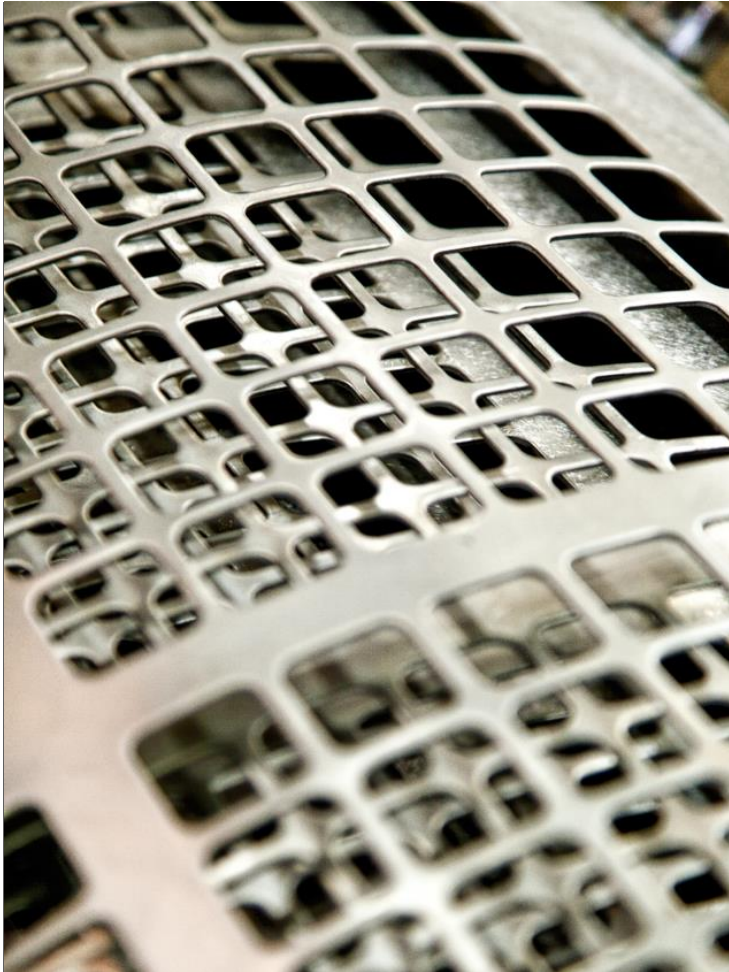
C&F Manufacturing division

Galway, Ireland (est. 1989)
Velim, Czech Republic (est. 2001)
Manila, Philippines (est. 2004)



C&F Manufacturing s.r.o. Czech Republic
Member of C&F Manufacturing division
Production area: 7000 m2
Employees: 120

C&F Group Locations



C&F Manufacturing advantage

- Skilled long term employees
- Reliable and by time checked material suppliers
- Wide production base
- Global company
- Continuous improvement
- Possible process and cost optimization by suggested manufacturing step-ups.

Automotive - Refrigeration - IT Industry - Air Conditioning - Wind Energy

CATERPILLAR®

 **United
Technologies**
Climate | Controls | Security

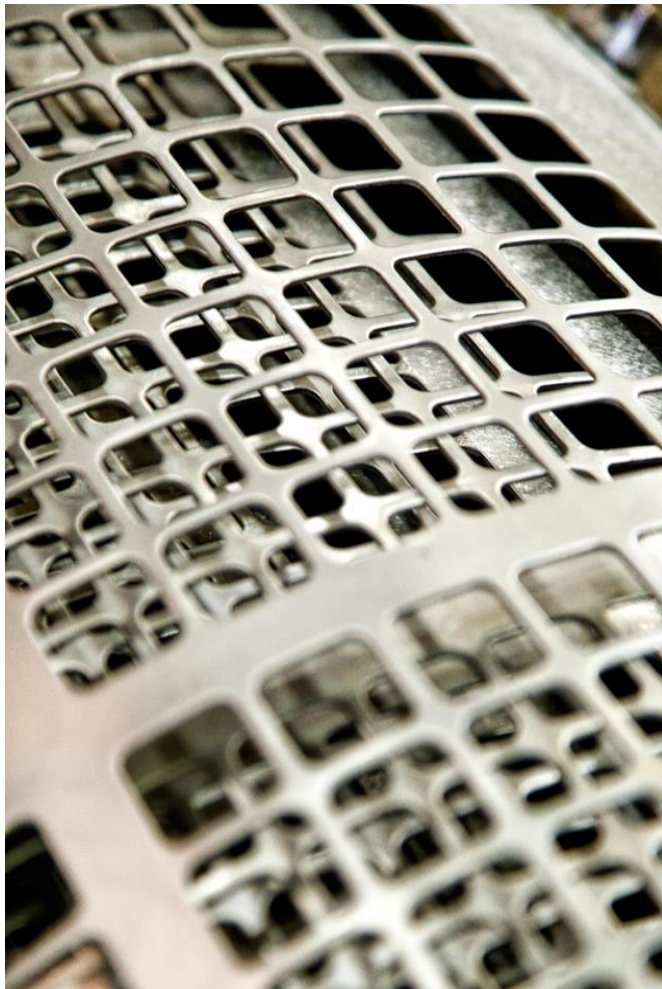
EMC²

APC®
by Schneider Electric

IBM®

KIS
Photo-Me Group

C&F 
Green Energy



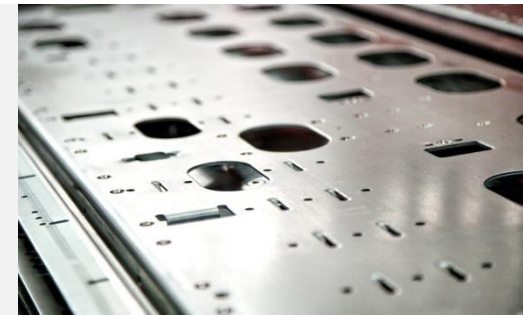
C&F Manufacturing division



Medium to high volume soft tool parts
(Punch, Bend, Laser, Robotic + man.
welding)
Low to medium value hard tool
components.
Great emphasis on quality.



C&F Manufacturing Czech Republic



- 19" server and storage racks
- Covers, walkways and components for hydraulic excavators
- Components and weldments for refrigeration equipment
- Indoor and outdoor electrical enclosures
- Conveyor systems and components
- Heat exchange systems

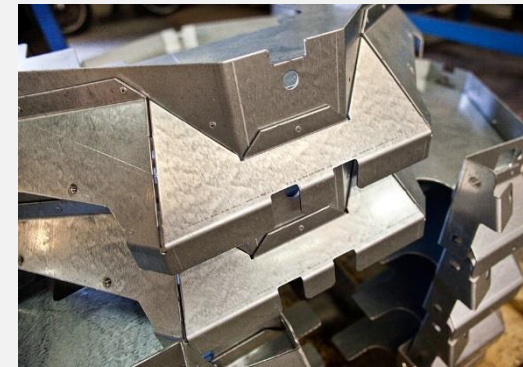
Automatization

Refrigeration

IT industry

Air conditioning

Heat exchanging



CATERPILLAR®

 **United
Technologies**
Climate | Controls | Security

EMC²

APC®
by Schneider Electric

IBM®

KION™
GROUP



SIEMENS Gamesa
RENEWABLE ENERGY

Google **Panasonic**

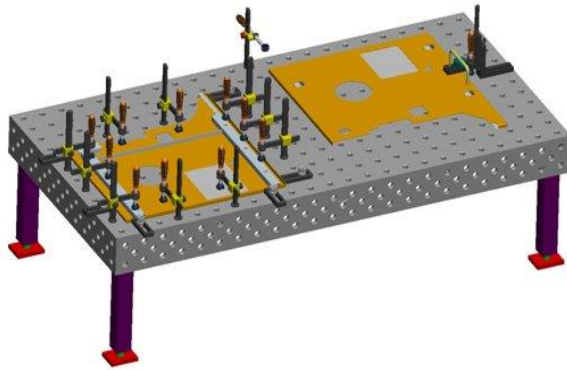


Certifications

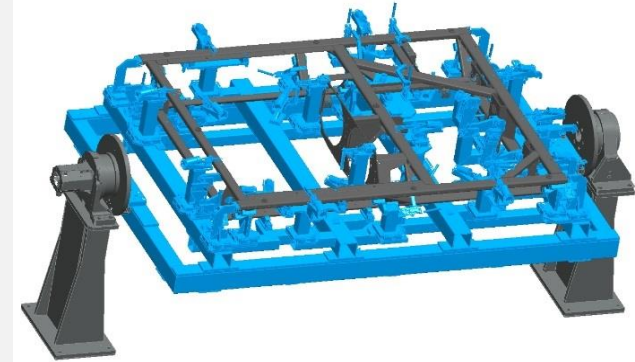
- ISO 9001

Measuring

- 6-axis 3D measuring arm
- Portable CMM device
- Real parts compared to 3D CAD data



Engineering & Design



Engineering Solutions for Customers

- Product cost optimization
- Product design & development
- CAD Design
- Special tooling design

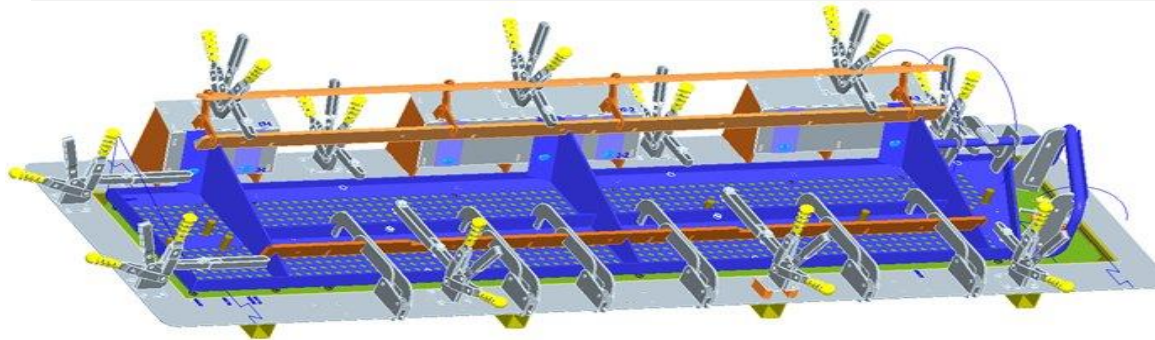
ProEngineer

SolidWorks

AutoCAD

WiCAM PN4000

PC-DMIS



Machine park Soft tooling



Punching

- 4 x TRUMPF TruPunch 5000
- 1x TRUMPF TruPunch 5000R
- 1x TRUMPF TruPunch 500R
- 1x TRUMPF 3000 Fiber 1300

Forming

- Forming range of 17x CNC Brake presses from 100 up to 530 tonns
- 12x Trumatic TrumaBend CNC Brake Press



Laser cutting

- 1x TRUMPF TruLaser 3030
- 1x TruLaser 3040
- 1x TruLaser Tube 7000 – Tube laser 8m
- 1x TruMatic 7000 - Combi machine

Welding

Welding range of MIG - TIG and spot welding
from 100 up to 250 kVa

Robotic welding

- Welding centrum Yaskawa H2-500D
- Two Fanuc welding robots



Machine park Hard tooling



Robotic welding line + 6m Tube laser

- Robotic welding line with two Fanuc robots.
- Two separate welding cells



Power pressing

Pressing on 11 power presses from 100 to 350 tonns
and 4 presses up 300 to 630 tonns - with decoiler

Surface finishing



In house powder paint line with 5 stage pretreatment

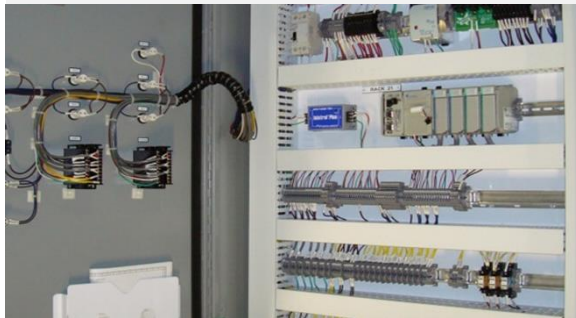
- Resistance reached: 1000 hrs. salt spray test, 30 CCT cycles
- Subcontract zinc - nickel - chrome plating, E-coating and hot dip galvanizing
- Maximum part size 4m x 2m x 1m

Assembly

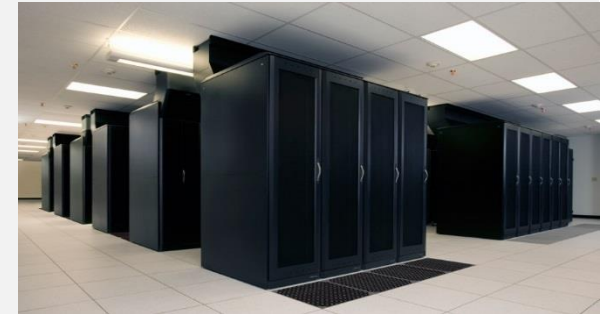
Mechanical & electromechanical
assembly, cable harnessing or
higher level Integration



Actual references



Actual references



- Racks for IT Modular System
- 1.0 to 6.0mm steel & aluminium
- Significant rate of hard-tooled parts
- Higher level assembly



Actual references



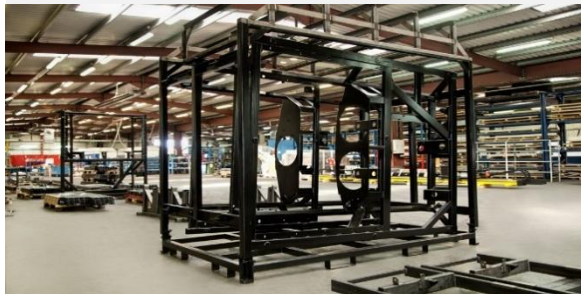
CATERPILLAR®



- Covers and walkways for hydraulic excavators
- 2.0 to 8.0 mm thick parts
- Higher level of welding performance



Actual references



- Components for refrigeration equipment
- Mobile cooling units
- 0.5mm to 2.75mm galvanized steel



Actual references



Panasonic

- Covers and internal parts of heat pumps



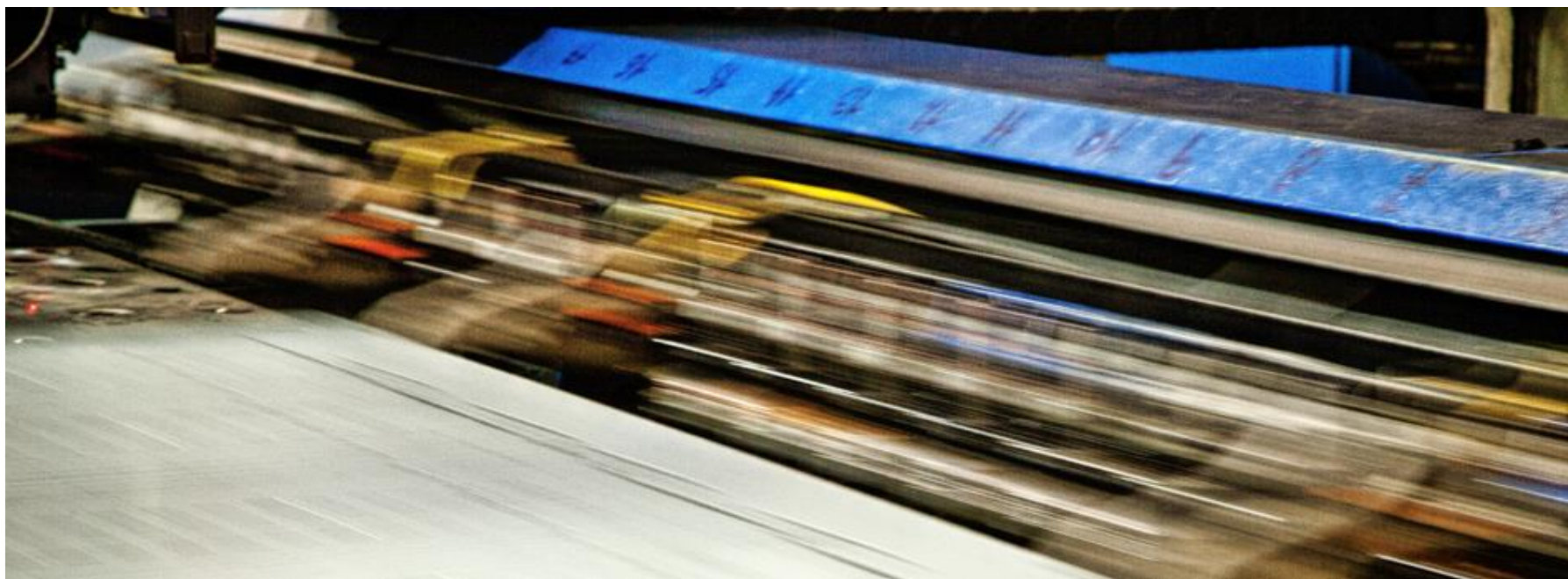
Actual references

SIEMENS Gamesa
RENEWABLE ENERGY



- Electro enclosures / cabinets
- Wind turbine converters





Contact

www.cfmanufacturing.cz

reception@cfmanufacturing.cz

C&F Manufacturing s.r.o.
Member of C&F Manufacturing
division
Production area: 7000 m²
Employees: 120