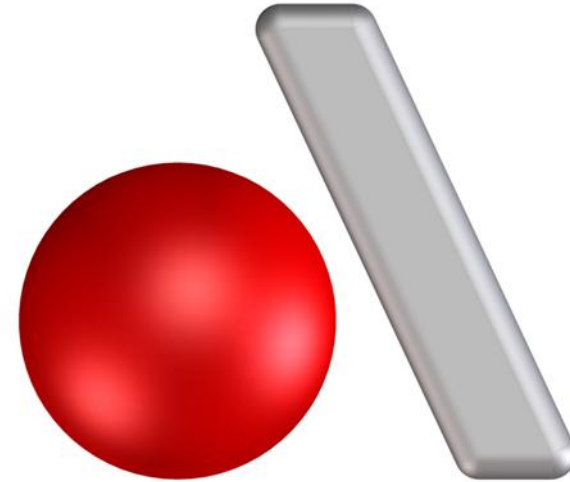


# ANGSTROM AUTOMOTIVE GROUP

*Company Overview 2025*



# WHO WE ARE



**Angstrom Automotive Group (AAG)** is a leading full-service supplier for Automotive and Industrial OEMs.

- US based privately held company, founded in 1999
- Global headquarters in Southfield, Michigan, USA
- 15 Companies (33 locations) across North America and Europe
- Over 4000 employees worldwide
- More than 4.0 million square feet of manufacturing floorspace
- Offering a vast portfolio of all types of parts including metal-formed, resin-based, electrical, lighting and more.

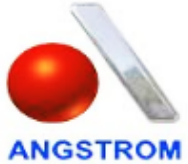
# OVERVIEW

# METAL FORMED

## TUBULAR ASSEMBLIES

## STAMPINGS

## FORGINGS



**Angstrom  
Taylor**

Taylor, MI

- Driveline Systems
- Propshafts
- U-Joint Needle Bearing
- Tubular Products
- Steering Comp.
- Machining Ops.



**Angstrom  
Tubular  
Solutions**

Ortonville, MI

- Engine Coolant / Air Bleed Tubes
- Turbocharger Coolant Feed Tubes
- Heater Inlet & Outlet Tubes
- Water Pump Inlet Tubes



**Angstrom  
Metal  
Stampings**

Tipp City, OH

- Structural Stamping
- Fabricated & Welded Assemblies
- Clutch Assemblies
- Heavy Truck Comp.
- Plastic over metal overlay



**Enforge**

Albemarle, NC

- Steel
- Steering Linkages
- Suspension Assemblies
- Control Arms
- Track Bars
- Center / Toe Links



**TruForge**

Eger, Hungary

- Steel
- Crown Wheels
- Clutch Bodies
- Synchronizer Rings
- Transmission Gears
- Sun Gears / Hubs



**Alumina**

Greenwood, SC

- Aluminum
- Suspension & Drive Train Components
- Control Arms
- Knuckles
- Yoke, Diff. Covers
- Blocks & Flanges



# ANGSTROM USA

## Current Products:



*Bearing Cups*



*Front Driveshafts*



*Tubes*

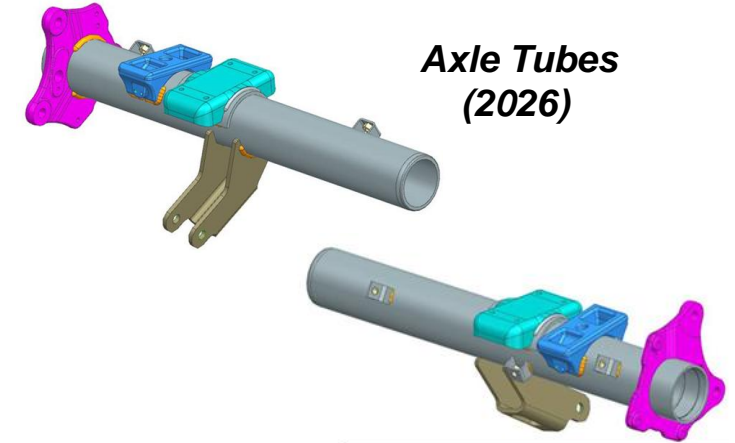


*Pitman Arms*

## Capabilities:

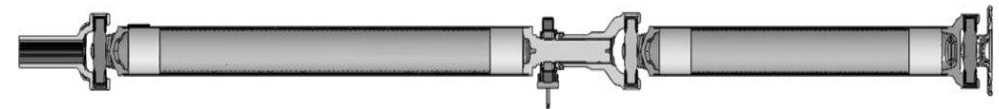
- Automatic Robotic Welding
- Tube Cutting / Chamfering
- Universal Balancing Machine
- Assembly
- Machining
- Broaching
- Swaging

## Future Products:



*Axle Tubes  
(2026)*

*Multi-piece Rear Driveshafts  
(2026)*





# ANGSTROM TUBULAR SOLUTIONS

## Capabilities:

- Tube Bending
  - ✓ Mild Steel
  - ✓ Stainless Steel
  - ✓ Aluminum
- Assembly
- Robotic Welding
- Spot-Welding
- End-Forming
- Automated TIG Welding



***Radiator Outlet***



***Water Pump Inlet***



***Turbo Coolant Return***



***Heater Inlet & Outlet***



***Turbo Coolant Feed***

# **Angstrom Metal Stamping**

## Capabilities:

- Small to Large Stampings
- Structural & Drawn Stampings
- Plastic Insert Molded Stampings
- Welded Assemblies
- Fabricated Assemblies
- Clutch Assemblies



***Plastic Insert Molded Stampings***



***Structural Stampings***



***Clutch Actuation***



***Clutch Assembly***



***Welded Assemblies***



# ENFORGE

## Capabilities:

- Blank Cutting
- Steel Forging
- Precision Machining
- Assembly
  - ✓ Bushing Presses Assemblies
  - ✓ Press and Crimp Assemblies
  - ✓ Robotic Loading



**Track Bars**



**Control Arms**



**Complete Steering Systems**





# TRUFORGE

## Capabilities:

- Heavy Steel Forging (up to 17kg)
- Heat Treat
- Shot Blast
- Inspection
- Machining

*Flanges*



*Gear Blanks*





**Capabilities:**

- Impact Forging (Hot or Cold)
- Heat Treat
- Pre-Form Operations
- Dye Penetrant / Ultrasonic / Metallurgical / Eddy Current Inspection
- Machining
- Assembly (Bushings, Ball Joints, Inserts)

***Control Arms******Suspension Links******Knuckles***

# OVERVIEW

# METAL FORMED

## ALUMINUM CASTINGS



**Troy**

**Monterrey**

**Grand Rapids**

**Fremont**

**Huntington**

**Ravenna**

**Wapakoneta**

**Angstrom Voss**

**Troy, TX**

- EV Powertrain
- Driveline
- Suspension
- Precision Machining
- Assembly
- Friction Stir Welding
- High Pressure Diecast

**Monterrey, MX**

- Chassis
- Driveline
- Steering
- Assembly / Test
- Heat Treat
- Precision Machining
- High Pressure Diecast

**Grand Rapids**

- Driveline Housing, Covers, Adaptors
- Mounting Brackets & Cross Members
- High Pressure Diecast
- Timing Belt & Valve Covers
- Precision Machining

**Fremont, IN**

- Powertrain Brackets
- Driveline Hubs and Carriers
- High Pressure Diecast
- Precision Machining

**Huntington, IN**

- Powertrain Oil Pan & Flywheel Hsg.
- Mercury Intakes
- Gravity Cast & Lost Foam
- Precision Machining

**Ravenna, OH**

- Safety Critical Knuckles Control Arm
- Driveline Stator Hsg.
- Gravity Cast
- Precision Machining

**Wapakoneta, OH**

- Safety Critical Knuckles Control Arm Cradles & Crossmembers
- Powertrain Brackets
- Low Pressure Cast

**Finnentrop, Ger.**

- Industrial Castings
- Canopy Systems
- High Pressure
- Lo Pressure
- Gravity Fed

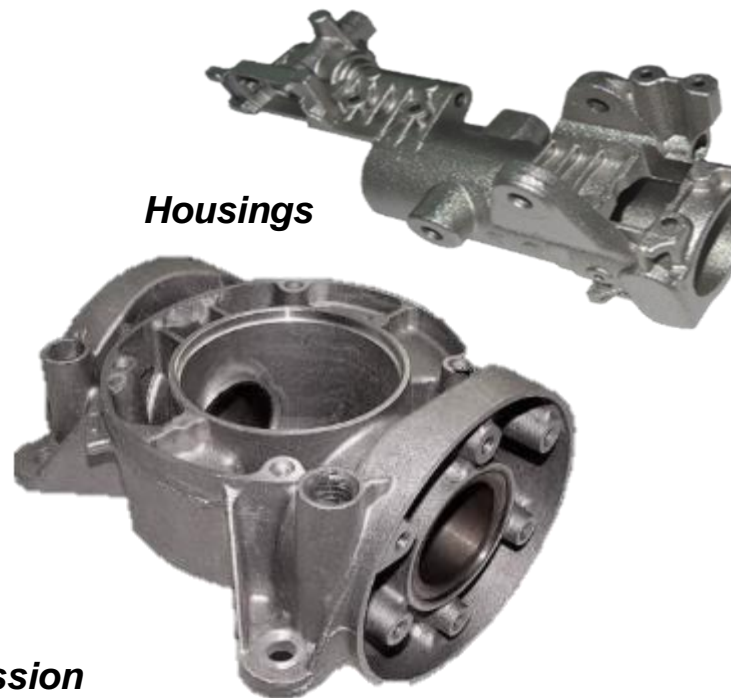


# ANDERTON ALUMINUM CASTINGS

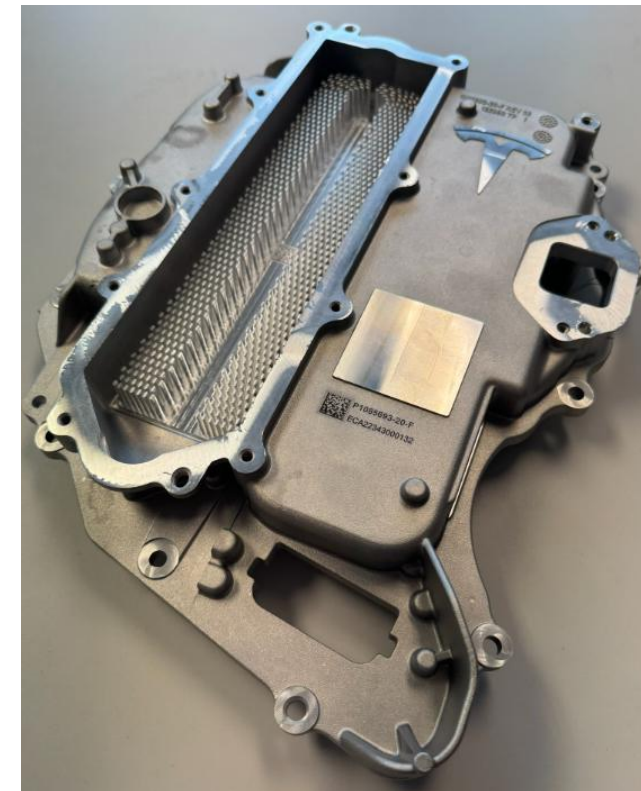
## Capabilities:

- Aluminum HPDC
- Precision Machining
- Friction Stir Welding
- Assembly

*Housings*



*Invertor*



*Transmission*



*Powertrain*





# GENERAL ALUMINUM CORPORATION

## Cast Capabilities:

### Processes

Gravity Permanent Mold  
Semi-Permanent Mold  
High Pressure Diecast  
Low Pressure Permanent Mold  
Lost Foam Casting

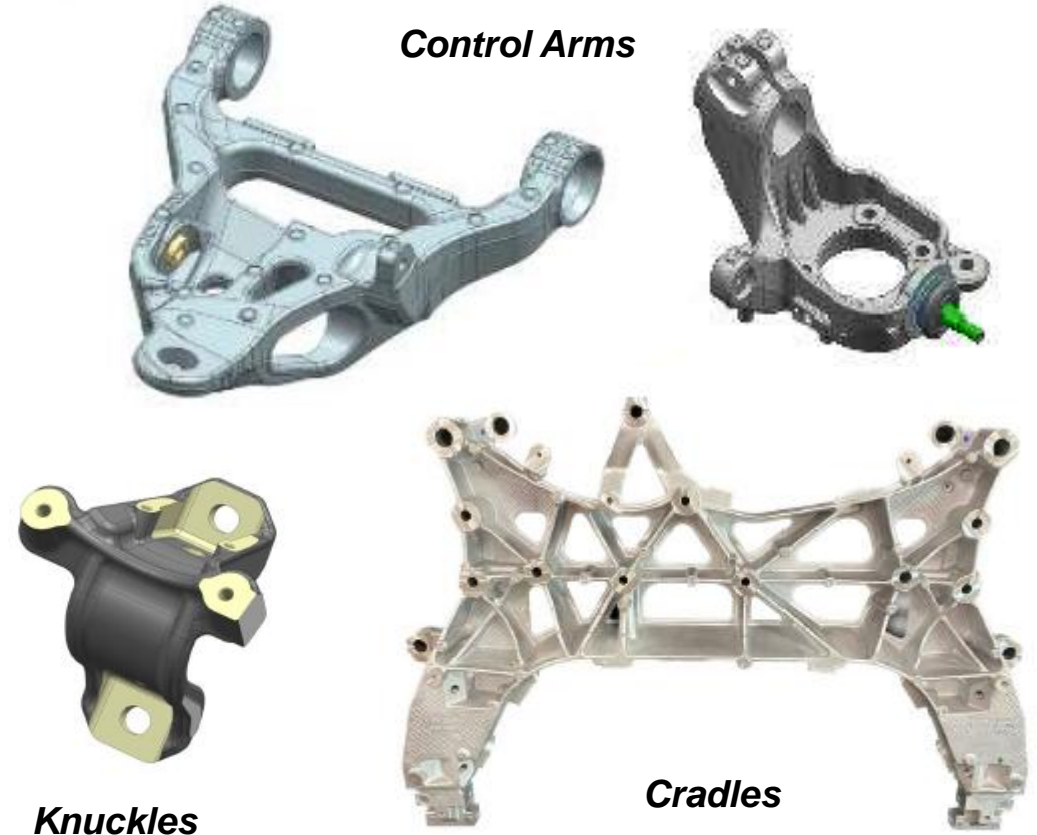
## Value add Capabilities:

### Processes

Horizontal CNC's  
Vertical CNC's  
Turning Lathes  
Assemblies  
Mechanical Testing



*Transfer Case*



*Knuckles*

*Cradles*



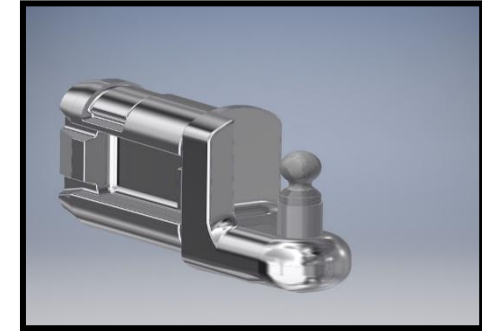
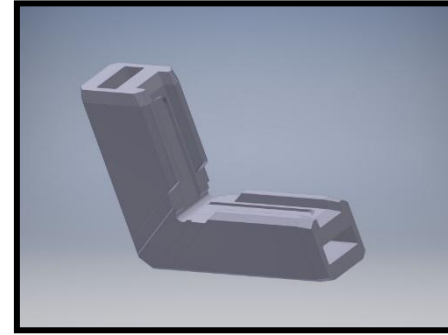
*Chain Case Assy*



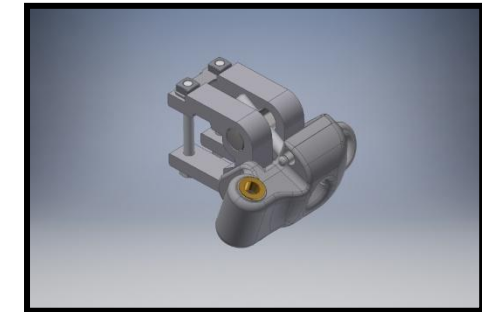
# VOSS

## Capabilities:

- HPDC, Gravity Casting
- CNC Machining
- Powder Coating



***Aluminum Castings***



# OVERVIEW

## RESIN BASED

### COMPRESSED FIBER

### POLYURETHANE FOAM

### PLASTIC INJECTION



ANGSTROM FIBER

#### Angstrom Fiber

Brantford, Ontario      Auburn, Maine  
Englewood, Ohio      Sydney, Ohio  
Polyester Fibers

- Interior Components
- Underbody Protection
- NVH materials



#### Aspen

Brighton, MI  
Manchester, TN  
Polyurethane Foam

- Energy Absorbing
- Interior Components



#### Tec Air

Munster, IN  
Plastic Injection

- Fans (Appliances, Medical & Automobiles)
- Blower Wheels
- Automotive Engine Cooling Shrouds

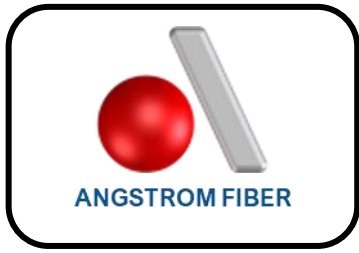


#### Vantec

Webster City, IA  
Plastic Injection

- Rec. Vehicle Components
- Small Appliances
- HVAC Assemblies
- Consumer Goods





# ANGSTROM FIBER

## Capabilities:

- Raw Material Production
- Fiber Forming
- Compression Molding
- Robotic Waterjet Cutting
- Assembly



*Wheel Liners*



*Trunk Liners*



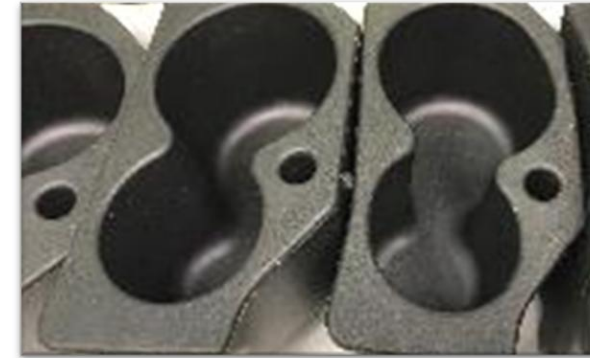
*Interior Headliners*



## Capabilities:

- Polyurethane Components
- Focus on Energy Management and Interiors
- Assembly
- Automation

*Cup Holders*



*Interior inserts (side panel, arm rest)*





# TECAIR

## Capabilities:

- Scientific Molding
- Precision Molding
- Kinematic / Functional parts
- Over-Molding / 2 Shot Molding
- Assembly



***Blower Wheel Cover***



***Engine Fan***



***HVAC Fan***



**VANTEC**

**Capabilities:**

- Plastic Injection Molding
- SolidWorks, Cad Key and AutoCAD
- Assembly
- Vibration Welding
- Automation



***Recreational Vehicles***  
***(Small Engine Cover)***



***Automotive Accessories***  
***(Running Boards)***



***Industrial HVAC***  
***(Components)***



***Consumer Goods***  
***(Coolers)***



***Consumer Goods***



***Industrial***

## WIRE HARNESS / CABLES



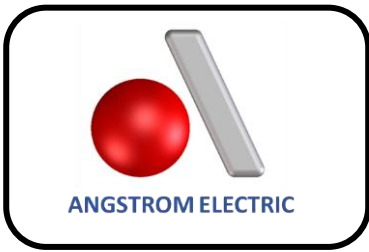
ANGSTROM ELECTRIC

### Angstrom Electric

Pontiac, Michigan - HQ  
El Paso, Texas - Warehouse  
Juarez, Mexico – Plant (3)

Electronics

- Wire Harness Assemblies
- Battery Cable Assemblies
- High Voltage Cable Assemblies



# ANGSTROM ELECTRIC

## Capabilities:

- Low and High Voltage Battery Cables
- Wire Harnesses for interiors  
(IP, cooling, thermal, NAV, entertainment etc.)
- In-house testing and validation

**Battery Cable**



**IP Wire Harness**



**EV Cable systems**





# MANUFACTURING FOOTPRINT

## North America

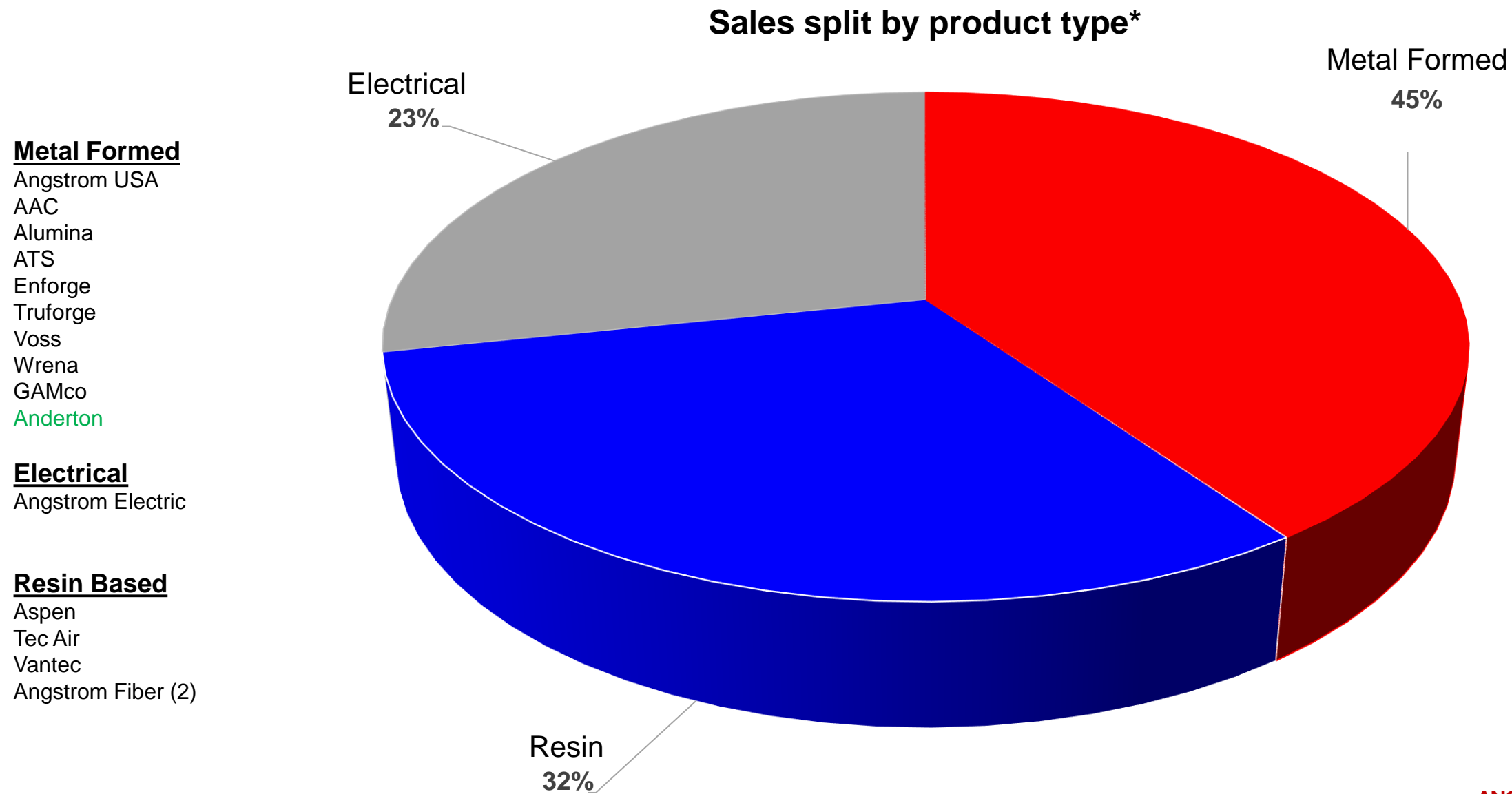


## Europe



- **Current Footprint**
- Further Global Expansion being considered
- Willing to partner with other key suppliers to support global presence

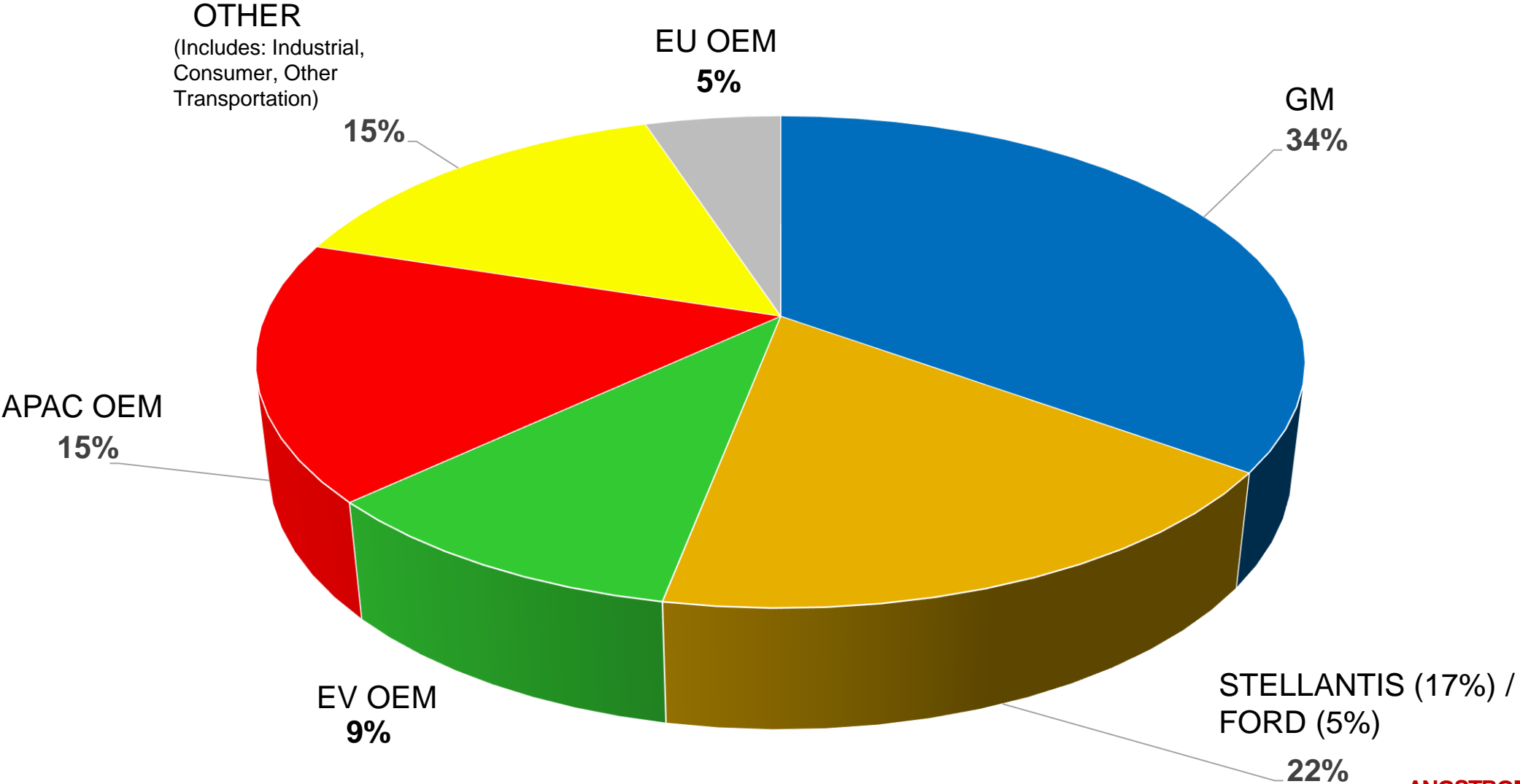
# CUSTOMER DEMOGRAPHICS



\* Based on forecasted 2024 Sales, which include latest acquisition GAMco but does not include Anderton



# CUSTOMER DEMOGRAPHICS



\* Based on forecasted 2023 Sales, include latest acquisition of Anderton

# CURRENT CUSTOMERS

We honor the relationships we have developed with our customers through our service and reliability

## Automotive



## Other Transportation



## Industrial



## Consumer Based



~ Angstrom has over 200 active customers! ~

# TAKEAWAYS / SUMMARY

## What does **ANGSTROM** offer?

- Vertically integrated cost competitive manufacturing
- Financially strong
- Excellent quality and delivery (IATF16949)
- Full Scale Logistics and Supply Chain Management
- **Angstrom is a Certified Minority Supplier**

# THANK YOU

For additional information or to send an RFQ please contact

**James (Jim) Geisendorfer**

VP Sales | Engineering | Strategy

- ☎ • +1 734-756-0838 / +1 248-635-5478
- ✉ • [jgeisendorfer@angstrom-usa.com](mailto:jgeisendorfer@angstrom-usa.com)
- 🌐 • [www.angstrom-usa.com](http://www.angstrom-usa.com)