



FASB

LINEA2

COMPANY PROFILE



**WHO
WE ARE**



FROM A SMALL MECHANICAL WORKSHOP TO A STRATEGIC PARTNER FOR OUR CLIENTS

FASB Linea 2 is a company specialized in the processing and production of metal assemblies and components made from tubes and sheet metal, operating through an integrated production model in which every phase – from design to final delivery – is managed entirely in-house.

Founded in 1981 as a small workshop focused on metalworking, FASB Linea 2 has grown into a recognized reference point in the tube and sheet metal processing industry. Through continuous investments in technology, training, and innovation, the company has established itself as a solid industrial player in Northern Italy within the metalworking sector.

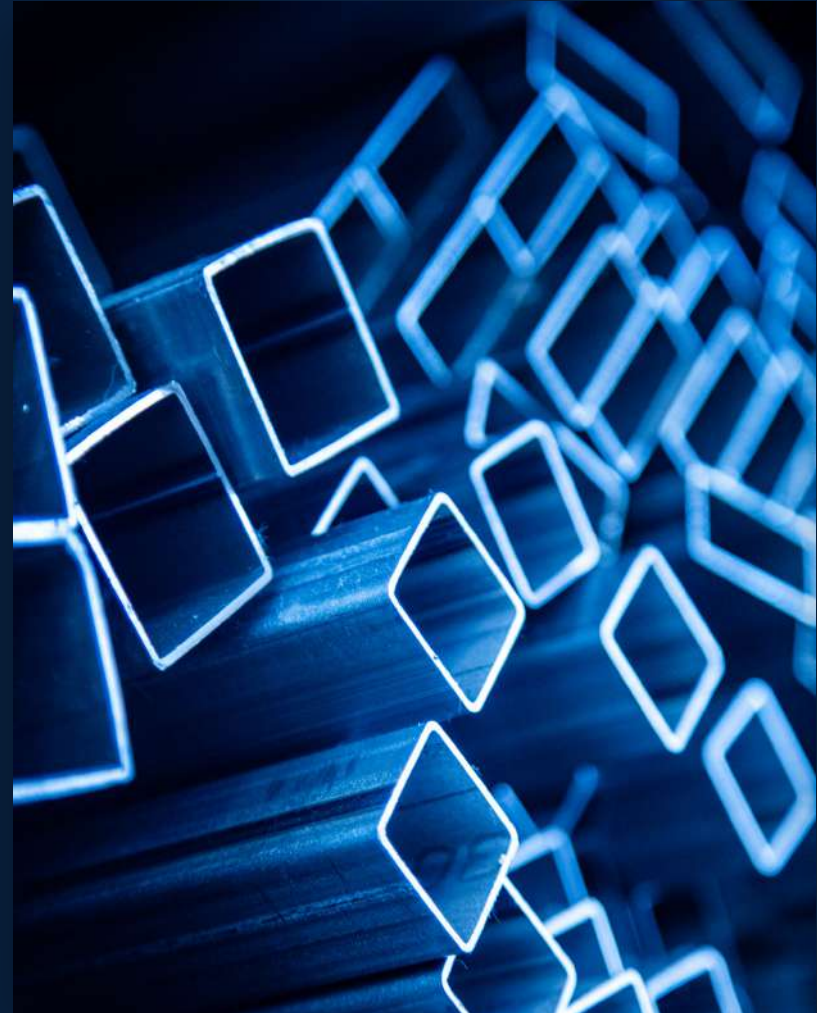
Today, embracing a new paradigm, FASB Linea 2 provides tailor-made solutions for its clients, combining the strength and capacity of a structured industrial company with the attention to detail and craftsmanship that define its identity.



OUR STRENGTH

FASB positions itself as a **strategic partner**, offering companies not merely a supplier, but a single, reliable interlocutor capable of managing the entire production process.

This includes every phase, from the initial technical drawing to the delivery of the finished component, ready for integration into production lines or for direct commercialization.





THE SECTORS WE OPERATE IN

Our experience originates in the furniture and gardening sectors, where precision, aesthetics, and functionality must coexist in perfect balance.

Over time, thanks to a complete production process, the versatility of our machinery, and the technical expertise of our team, we have expanded our know-how into numerous industrial contexts, collaborating with companies active in various mechanical and manufacturing sectors.

This approach allows us to deliver high-quality solutions even for projects of varying complexity, adapting to the specific needs of each client and application sector.

COMPANY PROFILE

OUR COMPETITIVE ADVANTAGE

At FASB Linea 2, the entire production cycle of semi-finished and finished components is carried out internally. From laser cutting to welding, from coating to assembly, every phase is managed under one roof.





THIS INTEGRATED APPROACH ALLOWS US TO:

- 01 **Reduce lead times and costs**, eliminating external steps and delays between different suppliers.
- 02 **Ensure continuous quality control**, starting from the design phase through to the finished product.
- 03 **Offer greater flexibility**, enabling faster management of urgent requests and design changes.
- 04 **Increase overall reliability**, as every phase is coordinated by a single technical reference.

INTEGRATED CONTRACT MANUFACTURING

01

Feasibility Study and Design

Each project begins with a feasibility analysis carried out in close collaboration with the client, aimed at identifying the most efficient technical and economic solution.



From idea
To finished product

02

Production of the Finished and Assembled Product

We manage the entire production cycle internally. Every phase is executed with precision to ensure compliance and consistent quality.



Our integrated contract manufacturing service follows a clear and structured methodology, organized into four fundamental phases.

Our 4 Key Pillars:



03

Quality Control

During production, we perform continuous inspections according to control plans defined during the design phase.



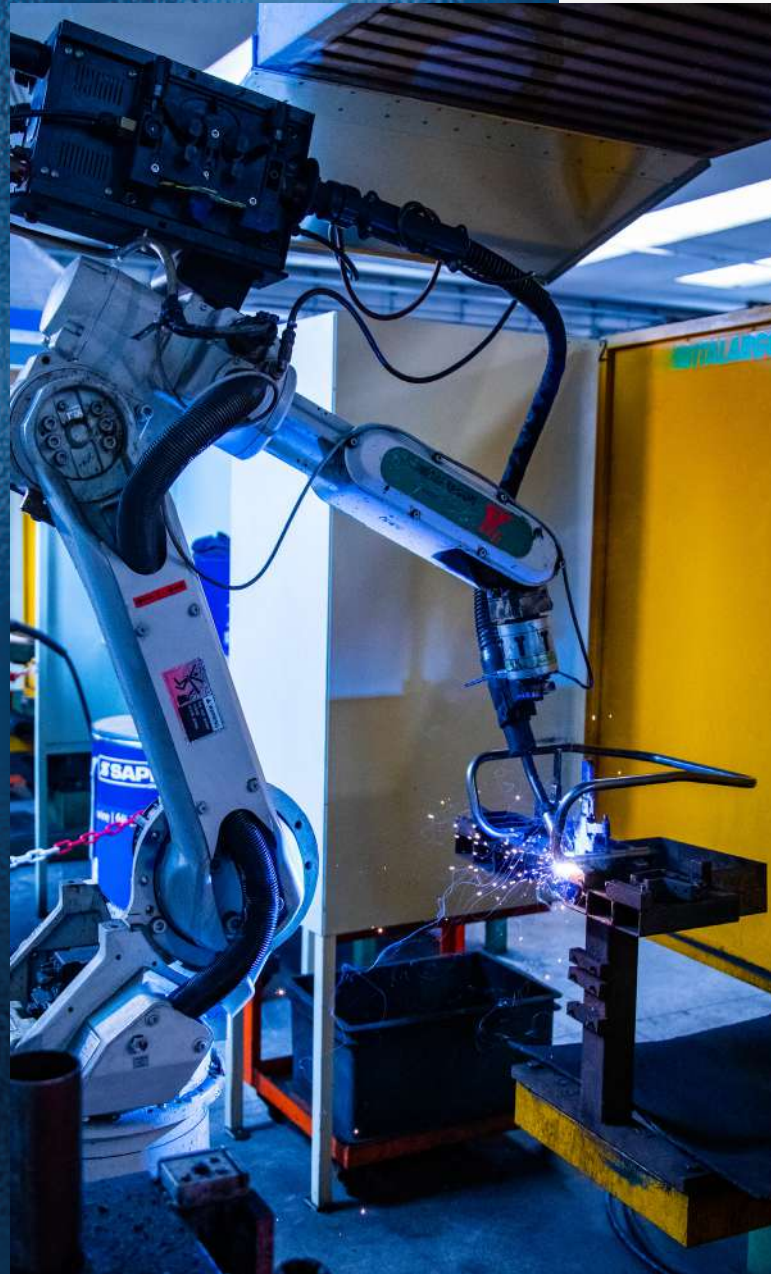
04

Final Inspection and Shipping

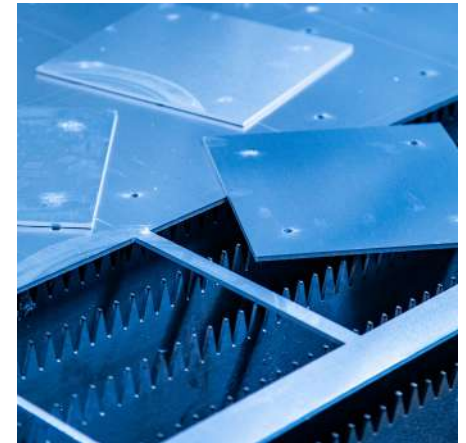
Before delivery, each component undergoes visual and instrumental inspections to ensure integrity and conformity.



OUR PROCESSING CAPABILITIES



**Laser cutting
of tubes**



**Laser cutting
of sheet metal**



**Tube bending
and deformation**



**Tube plastic
coating**



**Robotic welding
(MIG / TIG)**



**Tooling and
prototyping**



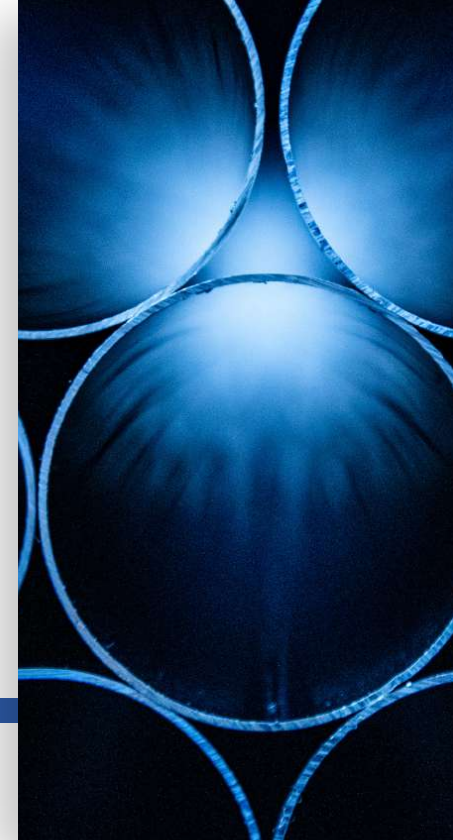
**Sheet metal
bending**



Powder coating



**Assembly and
packaging**



**We are based in Northern Italy,
in the Brianza manufacturing district, near Milan.**



You work better when you have the right space

FASB Linea 2 is a modern industrial company extending over 25,000 square meters, with 12,500 square meters covered.

Our growth, both nationally and internationally, is the result of a constant commitment to quality and innovation.

Total production area:
25,000 sqm.



If it's green, it's better

In 2023, we completed the installation of a photovoltaic system consisting of 338 solar panels, with a total capacity of 192.66 kWp. This investment reflects our commitment to maximizing energy efficiency and achieving 100% renewable energy usage, while dedicating the remaining surface area to green spaces, including a small vineyard and a natural spring-fed pond.





STRONG ROOTS, GLOBAL VISION

Rooted in the heart of Brianza – the cradle of Italian manufacturing tradition – we have built our identity on solid values: precision, reliability, innovation, and a collaborative spirit.

Today, thanks to an organized structure and advanced technologies, we work with Italian and international clients seeking a partner capable of delivering consistent quality and production flexibility.

Our vision is to continue growing while preserving the human and craftsmanship values that have always distinguished us, combining them with the industrial capabilities of a modern, forward-looking company.

FASB Linea 2: the entire production cycle under one roof, turning every project into a concrete result.

CONTACTS

FASB Linea 2 S.r.l.

www.fasb2.it

Tel: +39 039 95 50 75

Email: marketing@fasb2.it

LOCATIONS

Registered Office:

Via Uberto Visconti di Modrone, 11
20122 Milan – Italy

Operational Headquarters:

Via Confalonieri, 24
23894 Cremella (LC) – Italy



Company certified UNI EN ISO 9001:2015

FASB
LINEA2
FASB2.IT

